

# ENDEAVOUR

185 Kiwi Street, Riverside South



## Riverside South

Lot 97 / Phase 117-1 / Block 27

3 Bedroom and 2.5 Bath with Loft Layout

2,055 SQ FT

Basement - Finished Area 330 SQ FT

**\$779,900**

## Move-in Ready Townhome

- End Unit
- Hardwood on bedroom floor hallway and loft
- Hardwood stairs from main floor to bedroom floor
- Oak railing in loft in lieu of half wall
- Upgraded quartz and tile backsplash in Kitchen
- Cabinetry modifications in Kitchen including pull out shelves, upgraded drawer handles and square furniture kick and filler boxes on island
- Matte black hood fan
- Upgraded sinks in kitchen, Bath 1 and Bath 2
- Upgraded vanity in Bath 1
- 3' x 5' shower in Bath 1

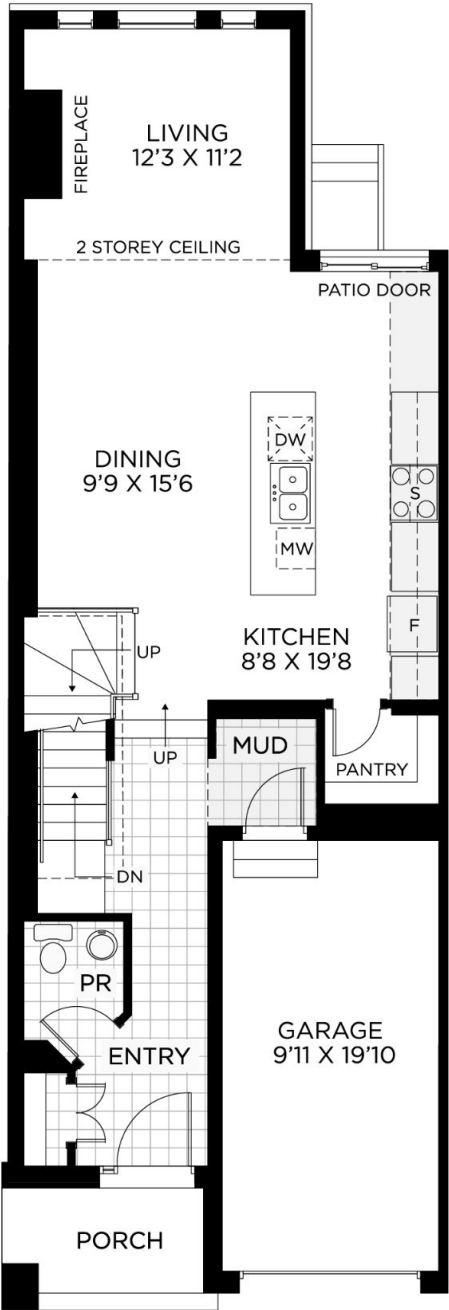
## Contact

Leigh-Ann Shearer - Sales Consultant

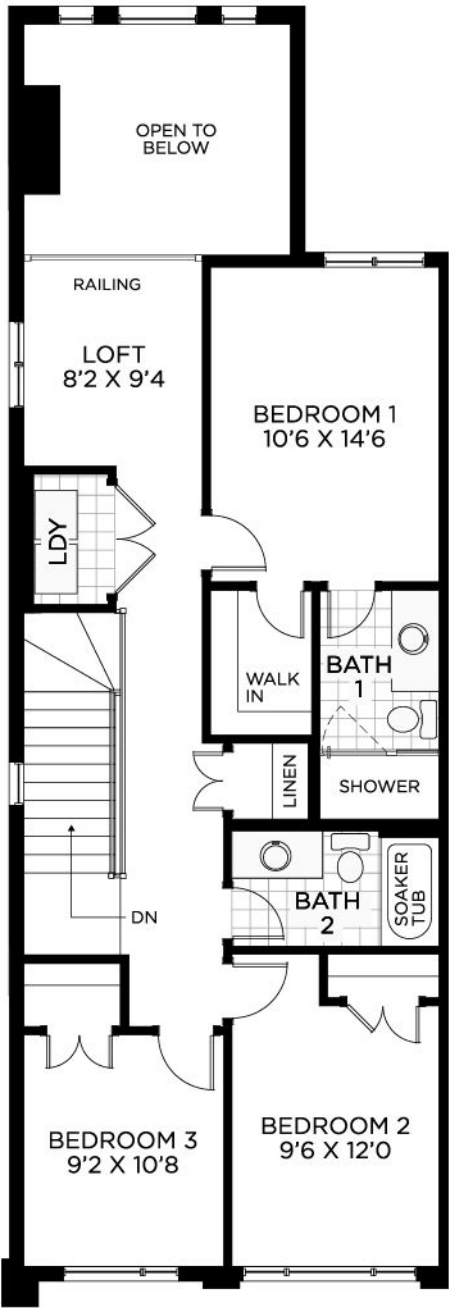
[riversouth@urbandale.com](mailto:riversouth@urbandale.com)

613-822-2190

# GROUND FLOOR



# BEDROOM FLOOR



# BASEMENT

