

HAZELTON PACIFIC

126 Bristol Crescent, Kemptville



The Creek

Phase 1 / Lot 14 / 31 Ft Lot

4 Bedroom and 2.5 Bath Layout.

2,208 SQ FT

\$859,900

Contact

Morgan Patmore - Sales Consultant

thecreek@urbandale.com

613-695-3011

Move-In Ready Single (Spring 2026)

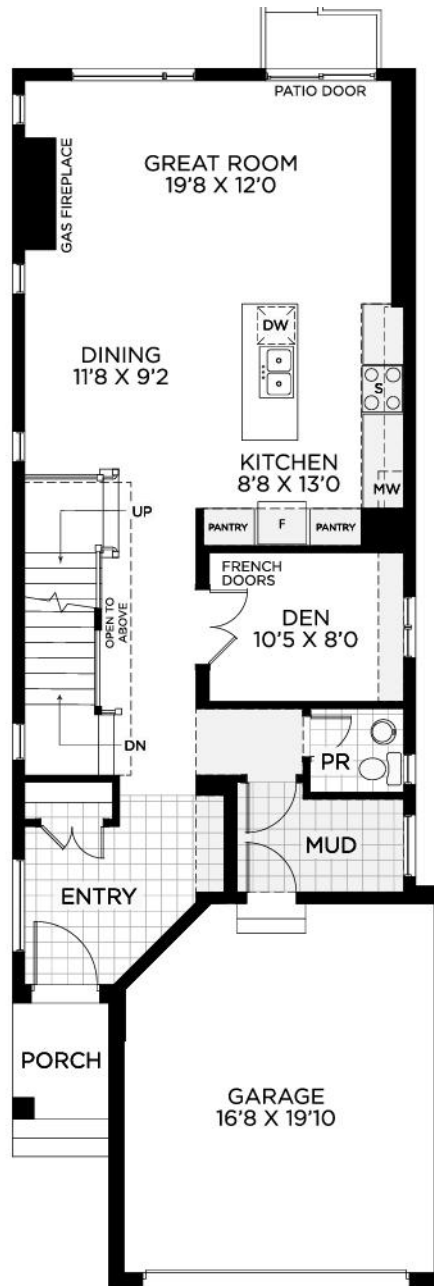
- Main floor den
- 3x5 shower in bath 1
- Free standing tub in bath 1
- Upgraded quartz in bath 1 and bath 2
- Oak hardwood stairs from main floor to bedroom floor
- Upgraded tile backsplash in kitchen
- Extended upper cabinets in kitchen
- Upgraded hood fan in kitchen
- Square furniture kick around island
- Additional pot lights in great room
- Finished games room in basement

Net-Zero Ready

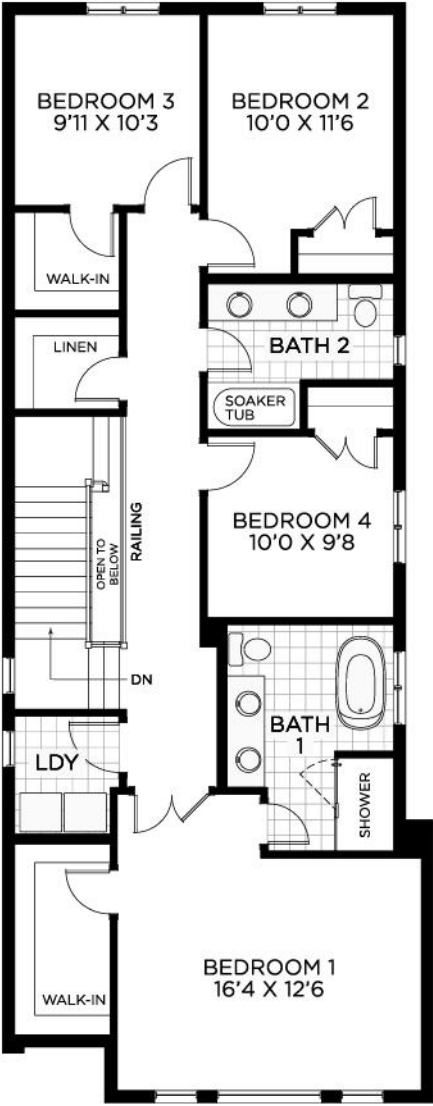
Your new home features Urbandale's Solar Energized Package: A 5 Kilowatt Rooftop Solar Panel System.

In addition to solar panels and a 200 amp service, your Urbandale home will feature a system of standard features and third party certification designed to enhance comfort and efficiency.

GROUND FLOOR



BEDROOM FLOOR



BASEMENT

