



# LAKEWOOD

138 Shuttleworth Drive

## Move-In Ready

- Single 30' Lot - 2 Car Garage
- 2,146 Sq. Ft.
- 3 Bedrooms with Loft
- 2.5 bath
- **\$929,900**

## Contact

Morgan Patmore | Sales Consultant

[cowansgrove@urbandale.com](mailto:cowansgrove@urbandale.com)

[\(613\) 695-3011](tel:6136953011)

## Upgrades

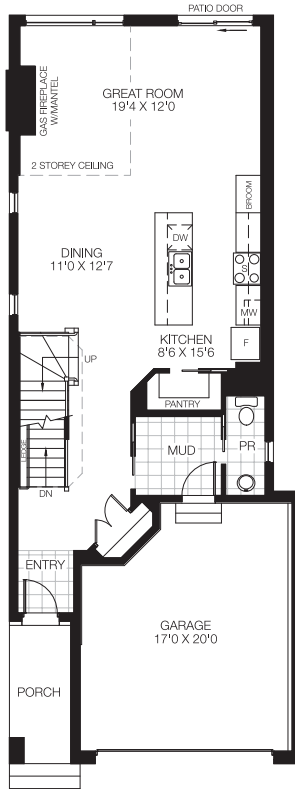
- Bonus Finished Games Room in Basement



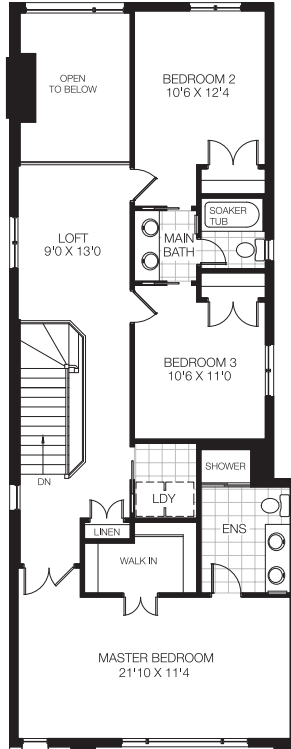
All illustrations are artist concepts. Homes may be left or right versions. All dimensions are approximate. Actual usable space may vary from stated area. Structural and mechanical requirements may result in dimensional revisions and/or adjustments to layout. Plans and specifications are subject to change without notice. Exterior elevations are determined by Urbandale and may vary. See the Sales Consultant for closing date details. ENERGY STAR® is an official mark of Natural Resources Canada. Used with permission. E. & O. E. 2025

# LAKEWOOD

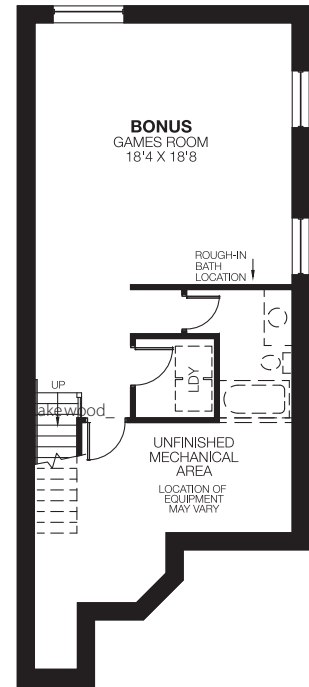
## FLOORPLAN



Ground Floor



Bedroom Floor



Basement  
Finished Area: 451 Sq. Ft.



by



All illustrations are artist concepts. Homes may be left or right versions. All dimensions are approximate. Actual usable space may vary from stated area. Structural and mechanical requirements may result in dimensional revisions and/or adjustments to layout. Plans and specifications are subject to change without notice. Exterior elevations are determined by Urbandale and may vary. See the Sales Consultant for closing date details. ENERGY STAR® is an official mark of Natural Resources Canada. Used with permission. E. & O. E. 2025