



# DORCHESTER

704 Solarium Ave

## Move-In Ready - Late November 2025

- Urban Townhome (Back to Back)
- 1,698 Sq. Ft.
- 3 Bedrooms
- 2.5 bath
- \$657,900

## Contact

Leigh-Ann Shearer | Sales Consultant

[riversouth@urbandale.com](mailto:riversouth@urbandale.com)

[\(613\) 822-2190](tel:(613)822-2190)

## Upgrades

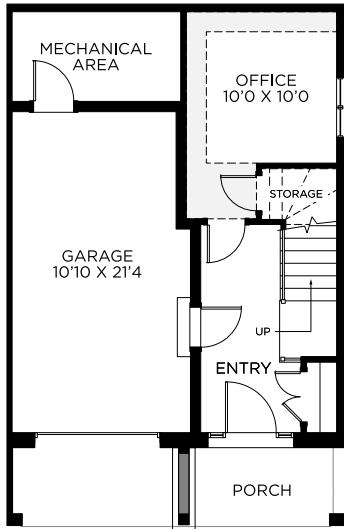
- Framing and electrical

Riverside South by  **Urbandale**  
construction

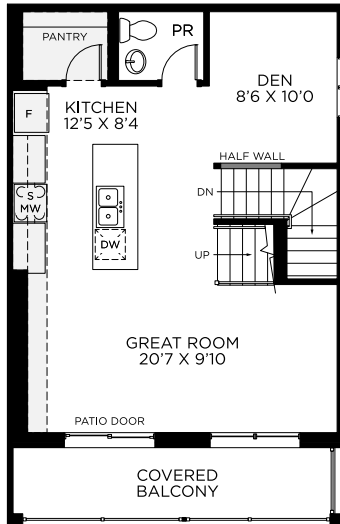
All illustrations are artist concepts. Homes may be left or right versions. All dimensions are approximate. Actual usable space may vary from stated area. Structural and mechanical requirements may result in dimensional revisions and/or adjustments to layout. Plans and specifications are subject to change without notice. Exterior elevations are determined by Urbandale and may vary. See the Sales Consultant for closing date details. ENERGY STAR® is an official mark of Natural Resources Canada. Used with permission. E. & O. E. 2025

# DORCHESTER

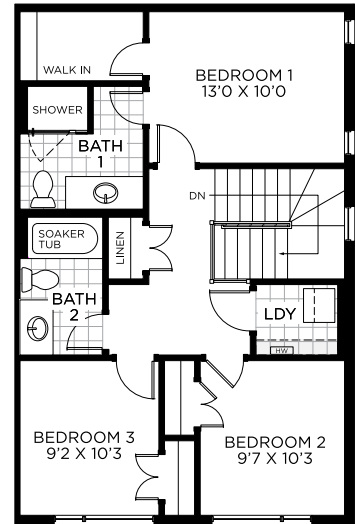
## FLOORPLAN



Ground Floor



Second Floor



Third Floor