



HAWKING II

350 Whitham Crescent

Ready To Finish

- End Unit Townhome
- 2,440 Sq. Ft.
- 3 Bedrooms with loft
- 2.5 Bath
- \$690,900

Contact

Morgan Patmore | Sales Consultant

thecreek@urbandale.com

[\(613\) 695-3011](tel:(613)695-3011)

Upgrades

- Optional 4 bedroom layout selected
- Hardwood staircase from ground floor to bedroom floor
- 3' x 5' shower in bath 1
- Electrical & wiring upgrades

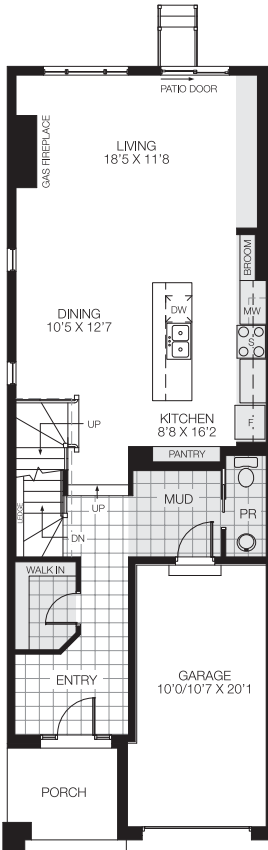
**\$10k Design Centre Bonus
OR Appliance Package**



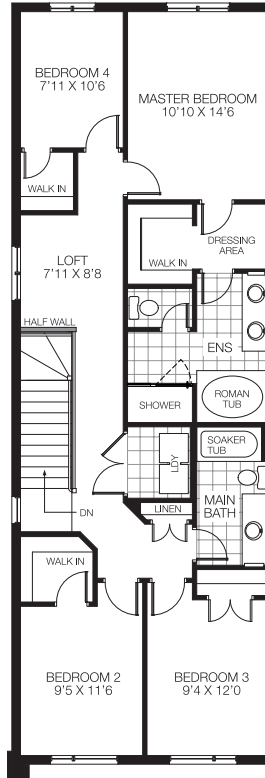
All illustrations are artist concepts. Homes may be left or right versions. All dimensions are approximate. Actual usable space may vary from stated area. Structural and mechanical requirements may result in dimensional revisions and/or adjustments to layout. Plans and specifications are subject to change without notice. Exterior elevations are determined by Urbandale and may vary. See the Sales Consultant for closing date details. ENERGY STAR® is an official mark of Natural Resources Canada. Used with permission. E. & O. E. 2025

HAWKING II

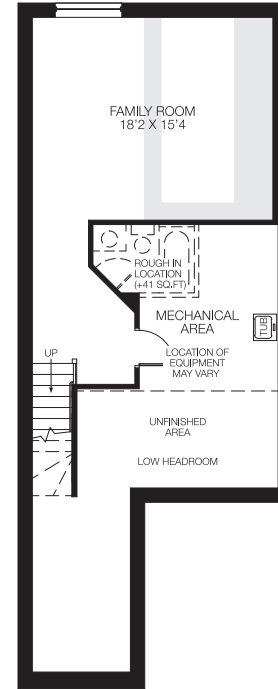
FLOORPLAN



Ground Floor



Bedroom Floor



Basement
Finished Area: 425 Sq. Ft.