



DISCOVERY

246 Bliss Crescent

Move-In Ready Model Home

- Interior Unit Townhome
- 2,119 Sq. Ft.
- 3 Bedrooms
- 2.5 bath
- \$729,900

Contact

Leigh-Ann Shearer | Sales Consultant

bradleycommons@urbandale.com

[\(613\) 822-2190](tel:(613) 822-2190)

Model Home Inclusions

- Window coverings
- Light fixtures
- Appliances

Upgrades

- Underpad



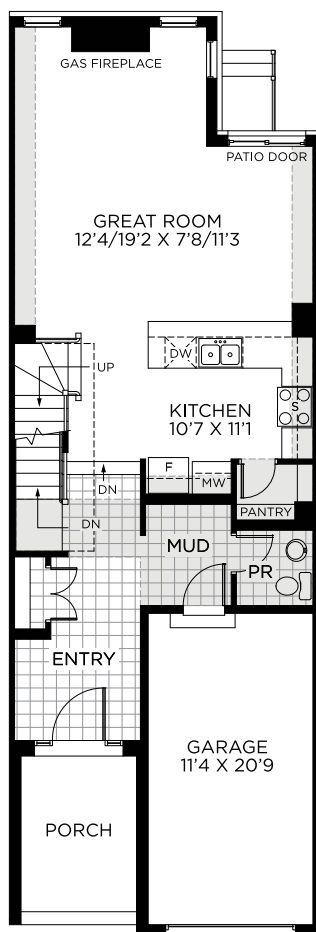
by



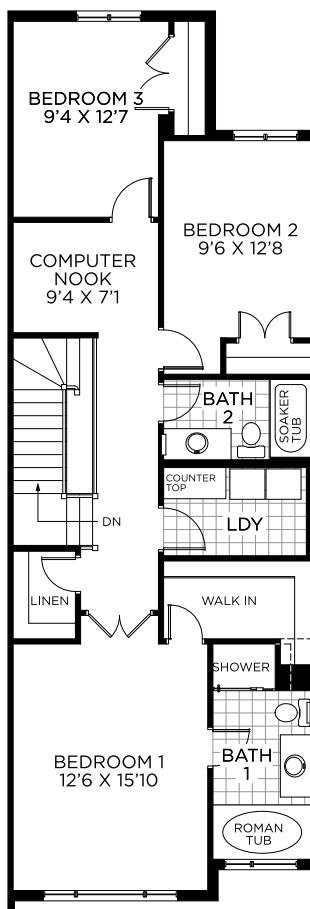
All illustrations are artist concepts. Homes may be left or right versions. All dimensions are approximate. Actual usable space may vary from stated area. Structural and mechanical requirements may result in dimensional revisions and/or adjustments to layout. Plans and specifications are subject to change without notice. Exterior elevations are determined by Urbandale and may vary. See the Sales Consultant for closing date details. ENERGY STAR® is an official mark of Natural Resources Canada. Used with permission. E. & O. E. 2025

DISCOVERY

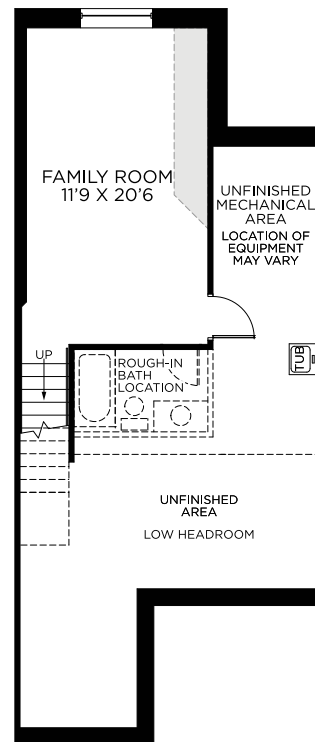
FLOORPLAN



Ground Floor



Bedroom Floor



Basement
Finished Area: 297 Sq. Ft.



by



All illustrations are artist concepts. Homes may be left or right versions. All dimensions are approximate. Actual usable space may vary from stated area. Structural and mechanical requirements may result in dimensional revisions and/or adjustments to layout. Plans and specifications are subject to change without notice. Exterior elevations are determined by Urbandale and may vary. See the Sales Consultant for closing date details. ENERGY STAR® is an official mark of Natural Resources Canada. Used with permission. E. & O. E. 2025