

DISCOVERY

246 Bliss Crescent, Stittsville



Move-In Ready Townhome

- Interior Unit
- Designer Curated Model Home
- Light fixtures and window coverings included
- Appliances included
- Upgraded foam underpad in all carpeted areas
- Walk-in pantry in Kitchen

The Creek

Lot 46 / Phase 4 / Block 5

3 Bedroom and 2.5 Bath Layout

2,119 SQ FT

Basement - Finished Area 297 SQ FT

\$729,900

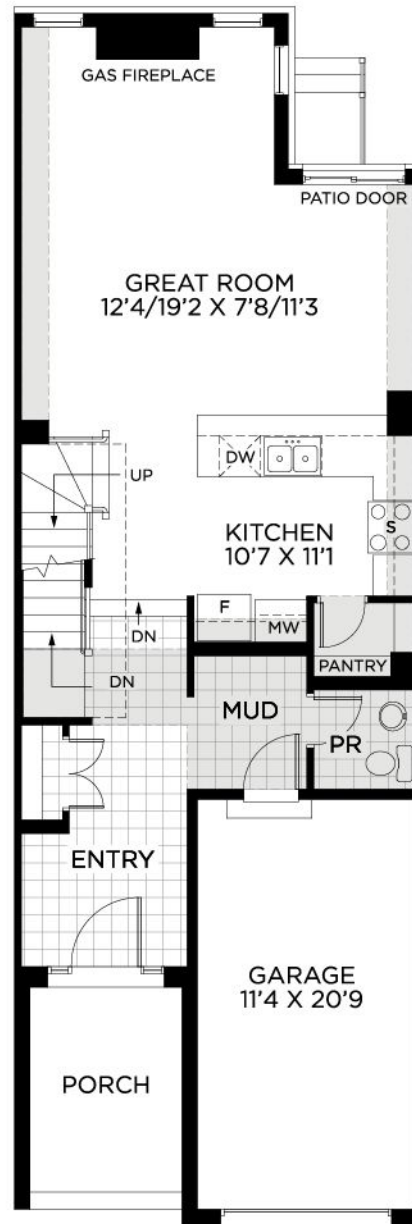
Contact

Leigh-Ann Shearer - Sales Consultant

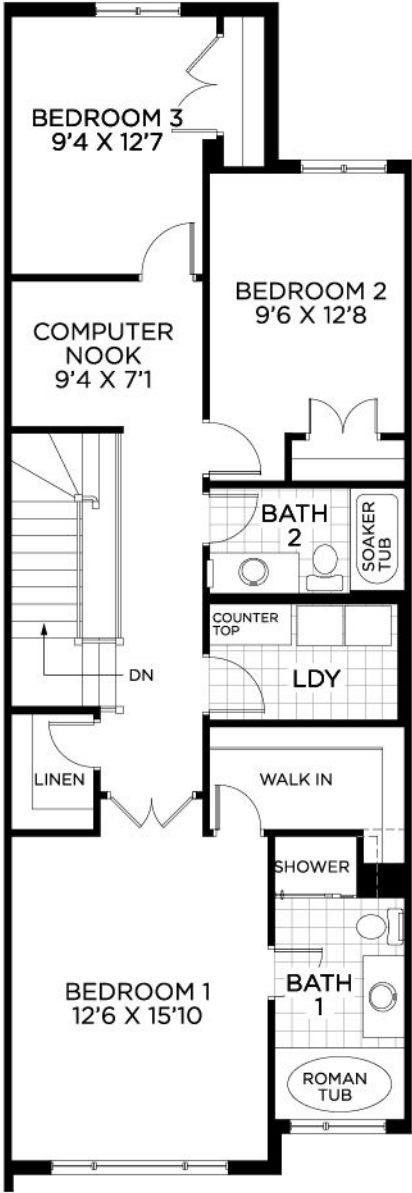
bradleycommons@urbandale.com

613-822-2190

GROUND FLOOR



BEDROOM FLOOR



BASEMENT

