

DISCOVERY

191 Kiwi Street, Ottawa



Riverside South

Lot 100 / Phase 117-1 / Block 28

3 Bedroom and 2.5 Bath Layout

2,144 SQ FT

Basement - Finished Area 308 SQ FT

\$734,900

Contact

Leigh-Ann Shearer - Sales Consultant

riversouth@urbandale.com

613-822-2190

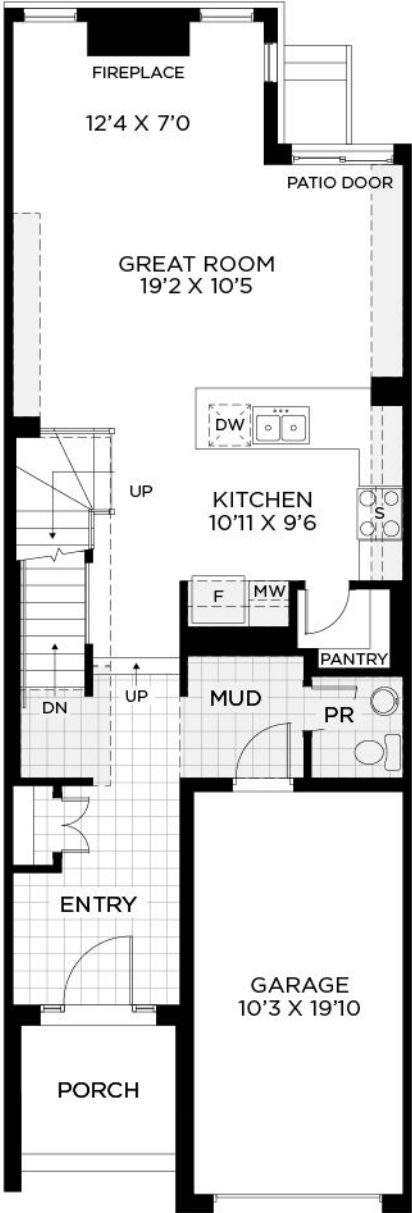
Ready to Finish Townhome

- Interior Unit
- 3' x 5' Shower in Bath 1
- 36" Linear Fireplace
- Free standing tub in Bath 1

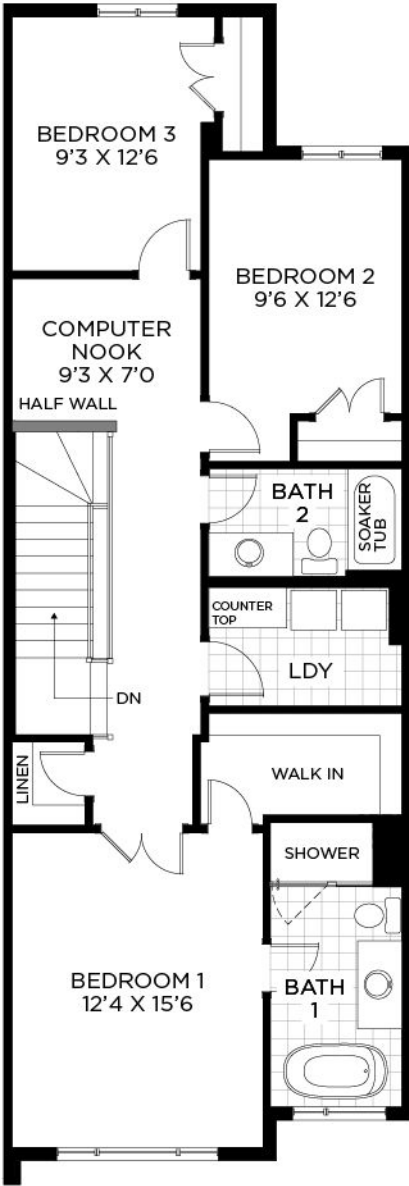
Select your finishes at the Urbandale Design Centre

Design Centre Consultants will guide you through Urbandale's extensive range of finishes and customize your home's interior, to suit your style with a **\$10k Design Centre Bonus!**

GROUND FLOOR



BEDROOM FLOOR



BASEMENT FLOOR

