



KANATA LAKES

Atlantis II

1086 Kitigan Grove | 2,433 Sq. Ft.
Lot 171 | Block 22 | Phase 9 | End Unit Townhome



\$899,900

Move In Early 2026

Standard 3 Bedroom, 2.5 Bath and Loft
Layout Includes

\$7K in Structural/Framing upgrades
Oak hardwood staircase from main to bedroom floor
Dual threshold shower with freestanding tub

Select Your Finishes at the Urbandale Design Centre

Design Centre Consultants will guide you through Urbandale's extensive range of finishes and customize your home's interior to suit your style with a

10K Design Centre BONUS!

Contact

Leigh-Ann Shearer | Sales Consultant

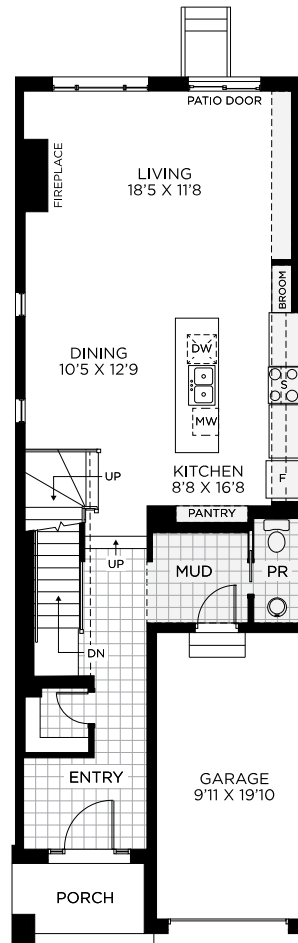
E: kanatalakes@urbandale.com | P: 613-822-2190



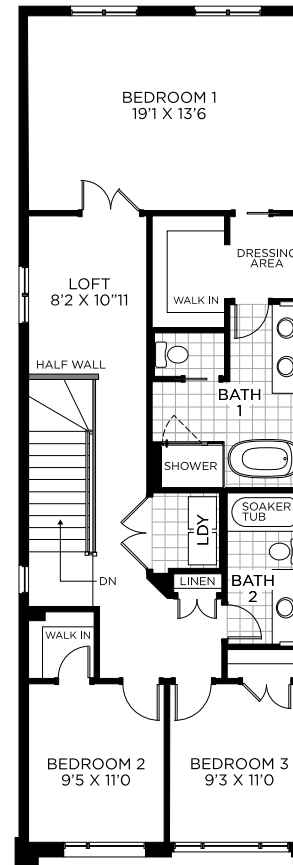
All illustrations are artist concepts and should be used as references only. Plans and specifications are subject to change without notice. All dimensions are approximate. Actual usable floor space may vary from the stated area. Structural/mechanical requirements may result in bulkheads, dimensional revisions, and/or minor adjustments that follow Taron regulations. Exterior steps and landings, including the garage, may vary with site grading. Brick sides and rears are subject to site specifications. Our homes are qualified under the CHBA's Net Zero Ready Home Labelling Program. Logo used with permission. E. & O. E. 11/03/2025

Atlantis II

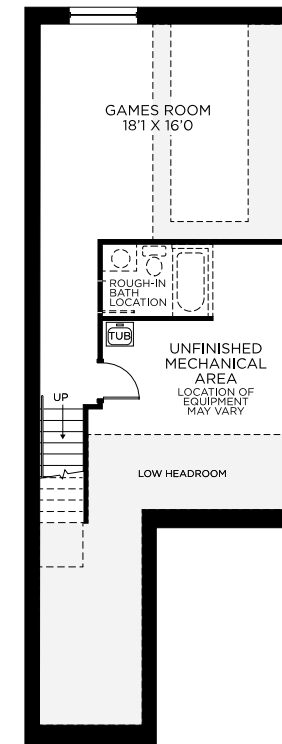
1086 Kitigan Grove | 2,433 Sq. Ft.
Lot 171 | Block 22 | Phase 9 | End Unit Townhome



Ground Floor



Bedroom Floor



Basement - Finished Area: 413 SQ. FT