



KANATA LAKES

Endeavour

1080 Kitigan Grove | 2,055 Sq. Ft.
Lot 168 | Block 22 | Phase 9 | Interior Unit Townhome



\$822,900

Move In Early 2026

Standard 3 Bedroom with 2.5 Bath and Loft
Layout Includes:

\$7.5K in Structural/Framing upgrades
Oak hardwood staircase from main to bedroom floor
Oak railing with Black metal spindles in lieu of half walls on Bedroom Floor
3x5 Shower in Bath 1

Select Your Finishes at the Urbandale Design Centre

Design Centre Consultants will guide you through Urbandale's extensive range of finishes and customize your home's interior to suit your style with a

10K Design Centre BONUS!

Contact

Leigh-Ann Shearer | Sales Consultant

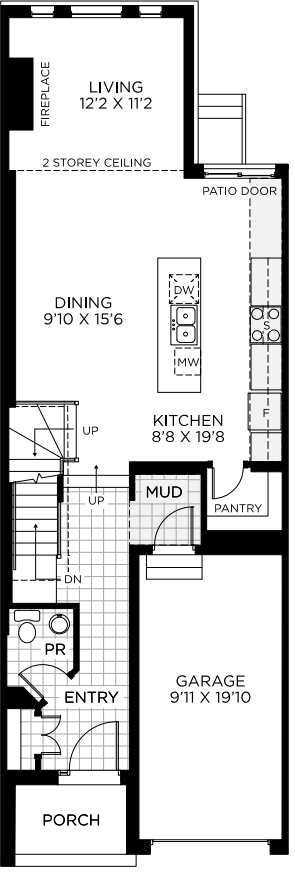
E: kanatalakes@urbandale.com | P: 613-822-2190



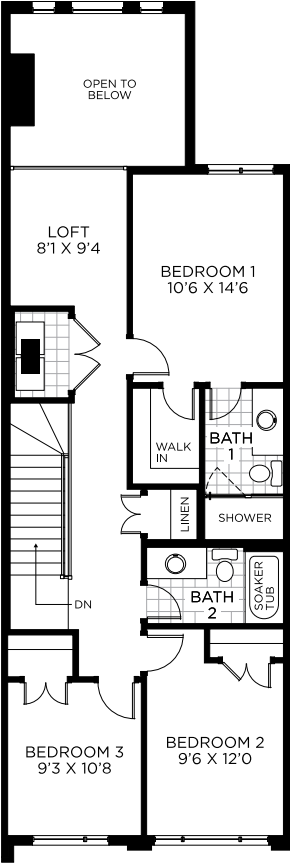
All illustrations are artist concepts and should be used as references only. Plans and specifications are subject to change without notice. All dimensions are approximate. Actual usable floor space may vary from the stated area. Structural/mechanical requirements may result in bulkheads, dimensional revisions, and/or minor adjustments that follow Tarion regulations. Exterior steps and landings, including the garage, may vary with site grading. Brick sides and rears are subject to site specifications. Our homes are qualified under the CHBA's Net Zero Ready Home Labelling Program. Logo used with permission. E. & O. E. 11/03/2025

Endeavour

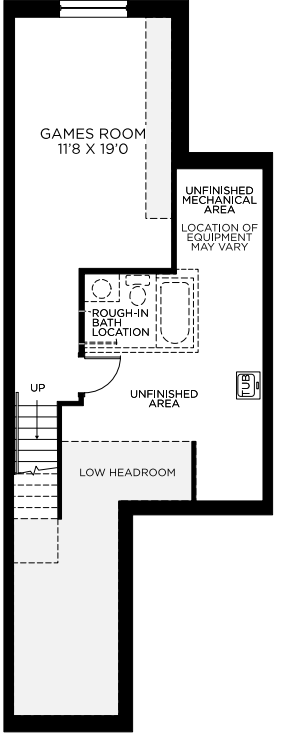
1080 Kitigan Grove | 2,055 Sq. Ft.
Lot 168 | Block 22 | Phase 9 | Interior Unit Townhome



Ground Floor



Bedroom Floor



Basement - Finished Area: 330SQ. FT