



TEMPLETON

1135 Kitigan Grove

Ready to Finish Single

- Single Home – 31 Ft Lot
- 1,998 Sq. Ft.
- 4 Bedrooms
- 2.5 bath
- \$999,900

Contact

Leigh-Ann Shearer | Sales Consultant

kanatalakes@urbandale.com

[\(613\) 822-2190](tel:(613) 822-2190)

Upgrades

- Framing and electrical

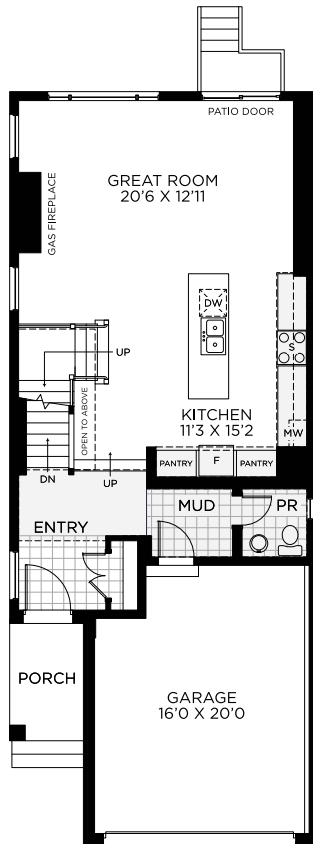
\$15k Design Centre Bonus



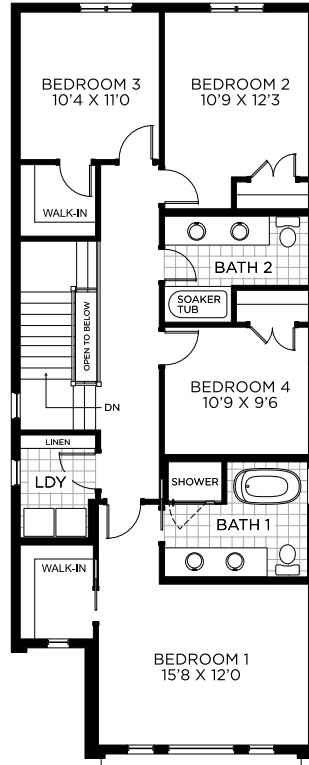
All illustrations are artist concepts. Homes may be left or right versions. All dimensions are approximate. Actual usable space may vary from stated area. Structural and mechanical requirements may result in dimensional revisions and/or adjustments to layout. Plans and specifications are subject to change without notice. Exterior elevations are determined by Urbandale and may vary. See the Sales Consultant for closing date details. ENERGY STAR® is an official mark of Natural Resources Canada. Used with permission. E. & O. E. 2025

TEMPLETON

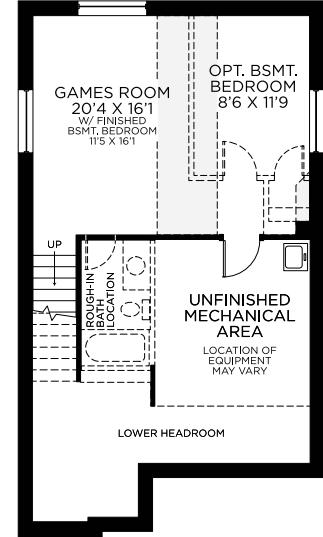
FLOORPLAN



Ground Floor



Bedroom Floor



Basement
Finished Area: 374 Sq. Ft.



by



All illustrations are artist concepts. Homes may be left or right versions. All dimensions are approximate. Actual usable space may vary from stated area. Structural and mechanical requirements may result in dimensional revisions and/or adjustments to layout. Plans and specifications are subject to change without notice. Exterior elevations are determined by Urbandale and may vary. See the Sales Consultant for closing date details. ENERGY STAR® is an official mark of Natural Resources Canada. Used with permission. E. & O. E. 2025