

CALYPSO

181 Kiwi Street, Riverside South



Move-in Ready Townhome

- Interior Unit
- Upgraded quartz and tile backsplash in kitchen
- Linear 36" fireplace - relocated
- Optional bedroom floor layout with larger Bedroom 1 and 3pc Bath 1
- 3' x 5' shower in bath 1
- Upgraded vanity in bath 1
- Upgraded sinks throughout
- Upgraded granite in Bath 2

Riverside South

Lot 95 / Phase 117-1 / Block 27

3 Bedroom and 2.5 Bath Layout

1,784 SQ FT

Basement - Finished Area 296 SQ FT

\$726,900

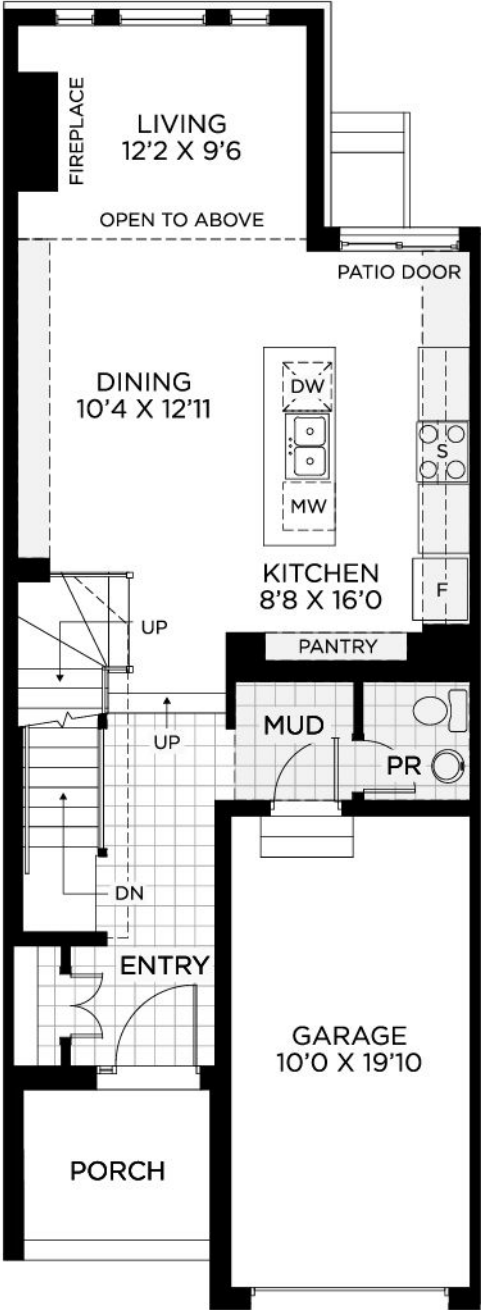
Contact

Leigh-Ann Shearer - Sales Consultant

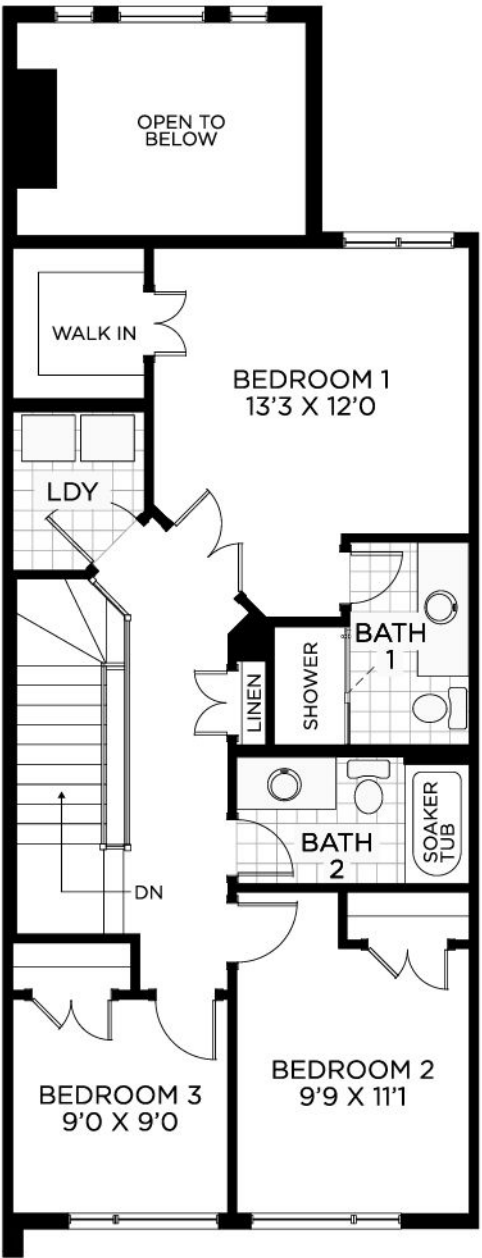
riversouth@urbandale.com

613-822-2190

GROUND FLOOR



BEDROOM FLOOR



BASEMENT

