

DISCOVERY

179 Kiwi Street, Riverside South



Move-in Ready Townhome

- Interior Unit
- Linear 36" fireplace
- Upgraded hood fan and quartz in Kitchen
- Upgraded faucets Kitchen, Bath 2 and Powder Room
- Upgraded sinks throughout
- Matte black interior door hardware throughout
- 3' x 5' shower in Bath 1

Riverside South

Lot 94 / Phase 117-1 / Block 27

3 Bedroom and 2.5 Bath Layout

2,144 SQ FT

Basement - Finished Area 308 SQ FT

\$729,900

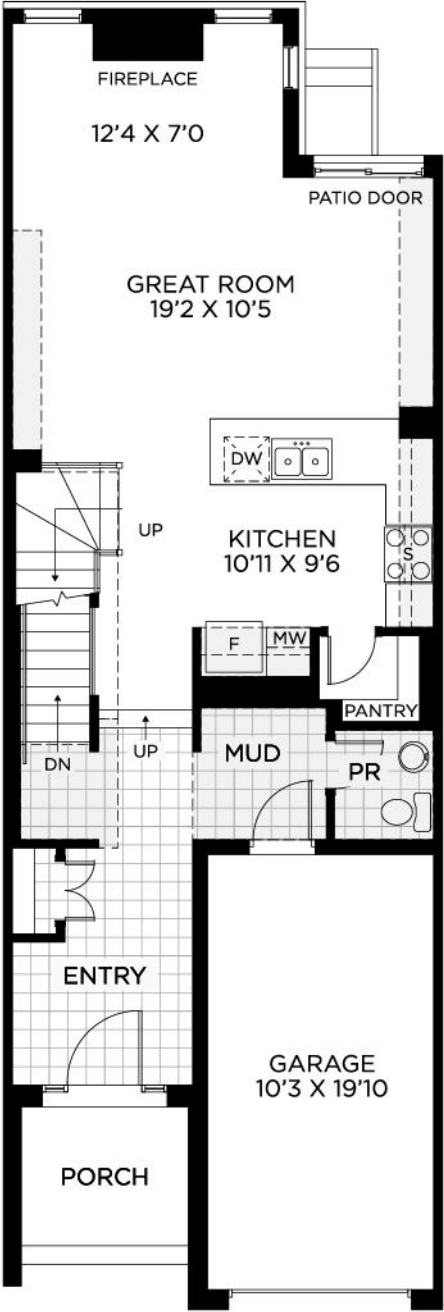
Contact

Leigh-Ann Shearer - Sales Consultant

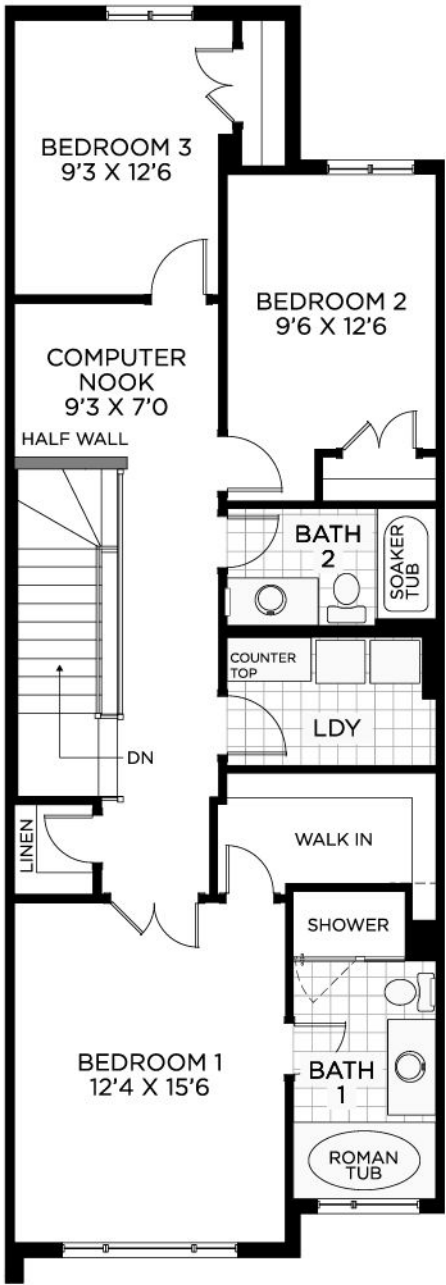
riversouth@urbandale.com

613-822-2190

GROUND FLOOR



BEDROOM FLOOR



BASEMENT

