

CALYPSO

175 Kiwi Street, Riverside South



Riverside South

Lot 92 / Phase 117-1 / Block 27

3 Bedroom and 2.5 Bath Layout

1,784 SQ FT

Basement - Finished Area 296 SQ FT

\$746,900

Move-in Ready Townhome

- End Unit
- Relocated fireplace
- Upgraded hardwood on main floor
- Hardwood stairs from main floor to bedroom floor
- Upgraded hood fan, quartz and tile backsplash in kitchen
- Cabinetry modifications including pots and pans drawers and square furniture kick around island in kitchen
- Upgraded vanity in Bath 1
- 3' x 5' shower in Bath 1
- Optional bedroom floor layout with larger Bedroom 1 and 3pc Bath 1

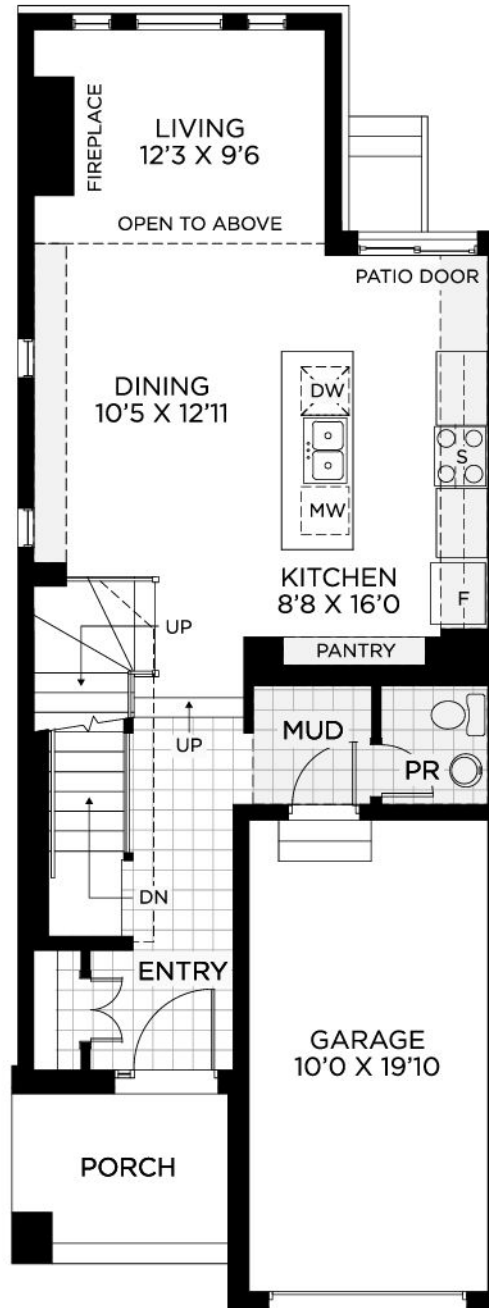
Contact

Leigh-Ann Shearer - Sales Consultant

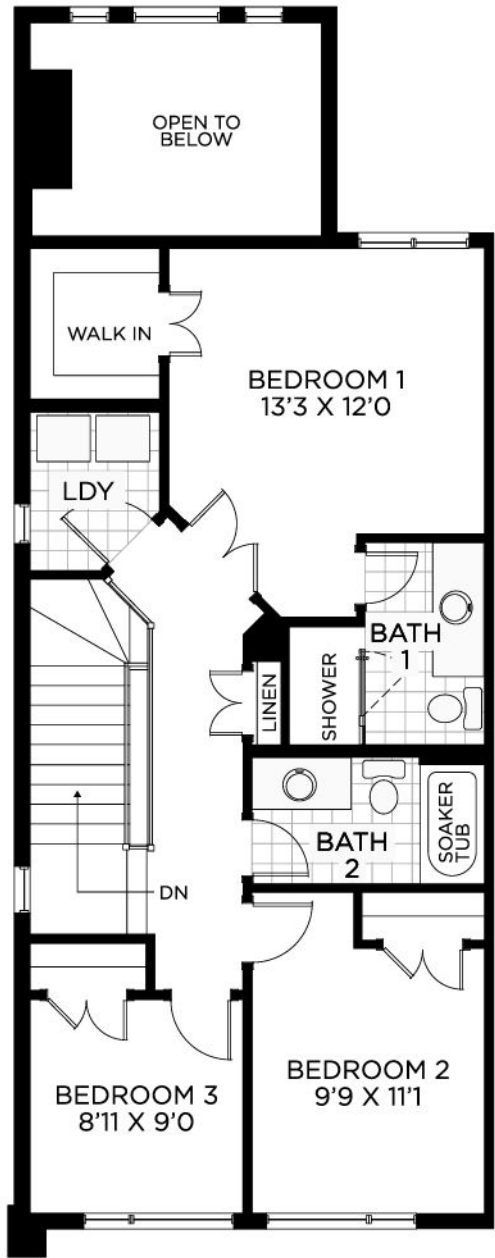
riversouth@urbandale.com

613-822-2190

GROUND FLOOR



BEDROOM FLOOR



BASEMENT

