

HAZELTON

2,208 SQ. FT.

126 Bristol Crescent
PACIFIC SERIES | 31' LOT
Phase 1 | Lot 14



**SOLAR
ENERGIZED
PACKAGE**



\$859,900

Standard 4 Bedroom and 2.5 Bath
layout includes 3 Piece Powder Room

Net Zero Ready Home

Your new home features

Urbandale's Solar Energized Package: A 5 Kilowatt Rooftop Solar Panel System.

In addition to solar panels and a 200 amp service, your Urbandale home will feature a system of standard features & third party certification designed to enhance comfort and efficiency.

\$8K in upgraded options for structural/framing, finishes and electrical
Oak hardwood staircase from the Ground Floor to the Bedroom Floor
3x5 shower in Bath 1

Select Your Finishes at the Urbandale Design Centre

Design Centre Consultants will guide you through Urbandale's extensive range of finishes, and customize your home's interior to suit your style with a

15K Design Centre BONUS!

Contact

Morgan Patmore | Sales Consultant

E: thecreek@urbandale.com

P: (613) 695-3011

All illustrations and images are artist concepts and should be used as reference only. Solar panel arrangement and roof layout may vary on home footing and best sunlight capture. Plans and specifications are subject to change without notice. All dimensions are approximate. Actual usable floor space may vary from stated area. Structural/mechanical requirements may result in bulkheads, dimensional revisions and/or minor adjustments that follow Tarion regulations. Exterior steps and landings, including garage, may vary with site grading. Brick sides and rears are subject to site specifications. Our homes are qualified under the CHBA's Net Zero Ready Home Labelling Program. Logo used with permission. E. & O. E. 18/01/24

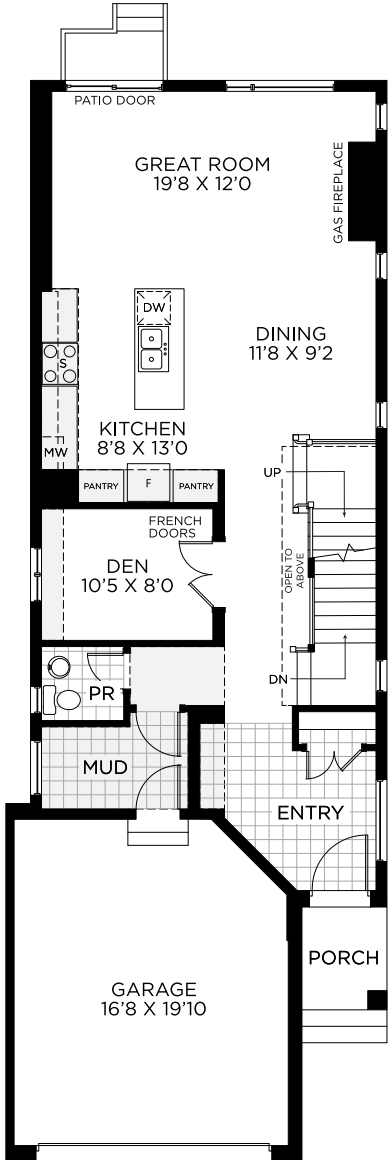


HAZELTON
2,208 SQ.FT.

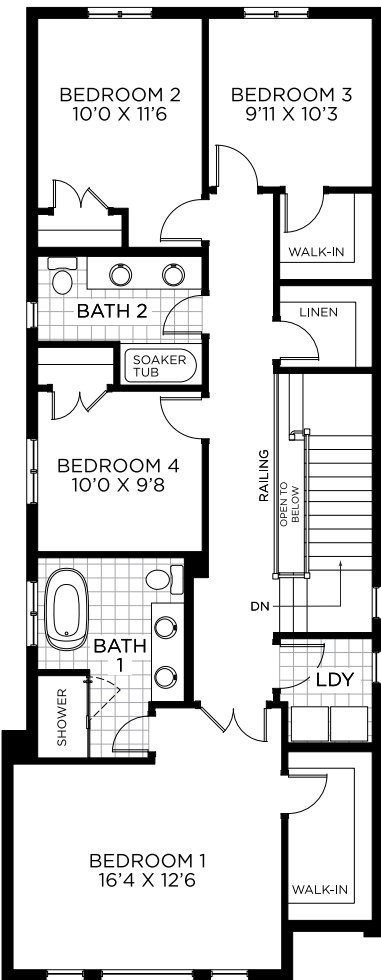
126 Bristol Crescent
PACIFIC SERIES | 31' LOT
Phase 1 | Lot 14



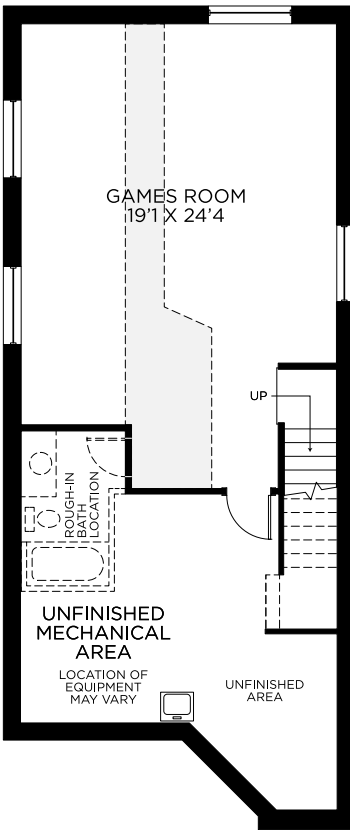
FLOORPLAN



GROUND FLOOR



BEDROOM FLOOR



BASEMENT - FINISHED AREA 559 SQ.FT.



All illustrations are artist concepts and should be used as reference only. Plans and specifications are subject to change without notice. All dimensions are approximate. Actual usable floor space may vary from stated area. Structural/mechanical requirements may result in bulkheads, dimensional revisions and/or minor adjustments that follow Tarion regulations. Exterior steps and landings, including garage, may vary with site grading. Brick sides and rears are subject to site specifications. Our homes are qualified under the CHBA's Net Zero Ready Home Labelling Program. Logo used with permission. E. & O. E. 08/24/23

