



## ATLANTIS II

2,443 SQ FT.

572 Cobra Crescent  
Block 27 | Phase 4  
Lot 247 | End Unit



# \$764,900

# Move In End of 2024/Start of 2025

**Select your Finishes at the Urbandale Design Centre**

Standard 3 Bedroom with loft layout & 2.5 Bath

**\$12K in Structural/Electrical upgrades**

### UPGRADES

Oak hardwood staircase from Ground to bedroom floor

3x5 shower with glass wall return in Bath 1

### CONTACT INFORMATION

Leigh Ann Shearer | Sales Consultants

E: [lshearer@urbandale.com](mailto:lshearer@urbandale.com)



All illustrations are artist concepts. Homes may be left of right versions. All dimensions are approximate. Actual usable space may vary from stated area. Structural/mechanical requirements may result in dimensional revisions and/or adjustments to layout. Plans and specifications are subject to change without notice. Exterior elevations are determined by Urbandale and may vary. ENERGY STAR® is an official mark of Natural Resources Canada. Used with permission. E. & O. E. 01/06/23

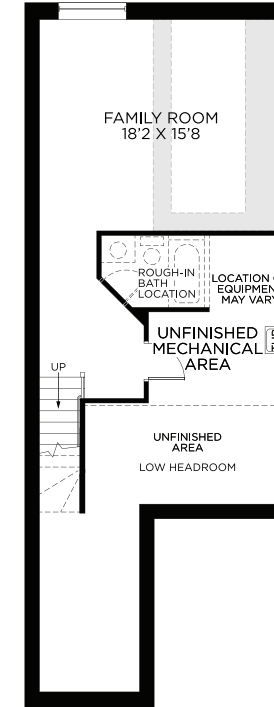
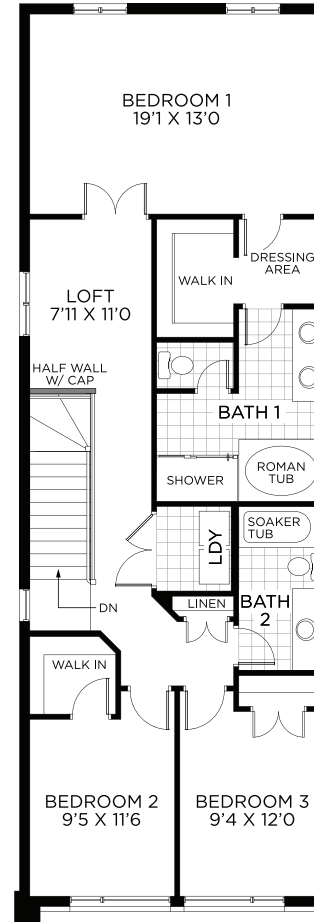
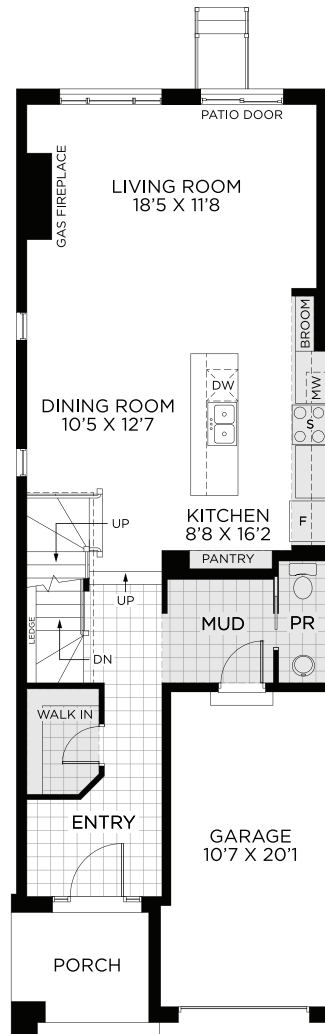


# ATLANTIS II

2,443 SQ. FT.

572 Cobra Crescent  
Block 27 | Phase 4  
Lot 247 | End Unit

# FLOORPLANS



GROUND FLOOR

BEDROOM FLOOR

BASEMENT  
FINISHED AREA: 425 sq. ft.



All illustrations are artist concepts. Homes may be left of right versions. All dimensions are approximate. Actual usable space may vary from stated area. Structural/mechanical requirements may result in dimensional revisions and/or adjustments to layout. Plans and specifications are subject to change without notice. Exterior elevations are determined by Urbandale and may vary. ENERGY STAR® is an official mark of Natural Resources Canada. Used with permission. E. & O. E. 01/06/23

