



CALYPSO

1,809 SQ. FT.

547 COBRA CRESCENT
INTERIOR UNIT
Lot 227 | Block 24 | Phase 4



\$674,900

Move In End of 2024/Start of 2025

Select your Finishes at the Urbandale Design Centre

Optional Ground floor layout with relocated fireplace
3 bedrooms and 2.5 bath including a 4 piece Bath 1

\$2600 in Structural and Electrical Upgrades

UPGRADES

36" Linear fireplace
3x5 shower in Bath 1

CONTACT INFORMATION

Leigh-Ann Shearer | Sales Consultant
E: lshearer@urbandale.com



All illustrations are artist concepts. Homes may be left of right versions. All dimensions are approximate. Actual usable space may vary from stated area. Structural/mechanical requirements may result in dimensional revisions and/or adjustments to layout. Plans and specifications are subject to change without notice. Exterior elevations are determined by Urbandale and may vary. ENERGY STAR® is an official mark of Natural Resources Canada. Used with permission. E. & O. E. 01/06/23



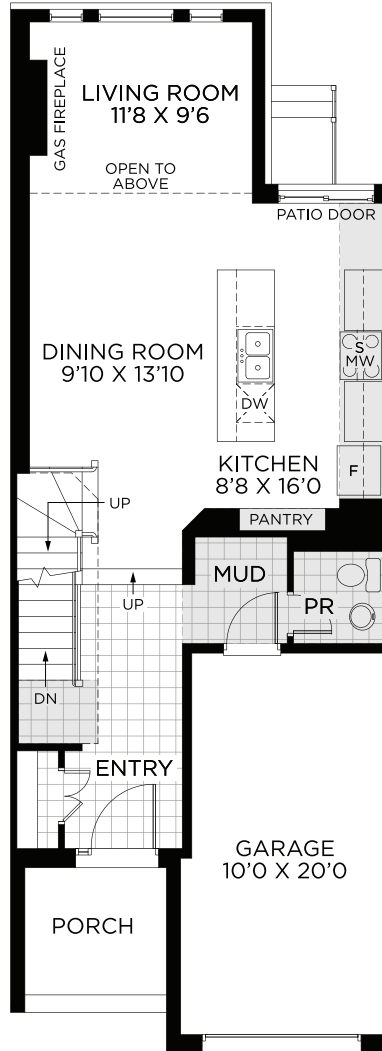
CALYPSO

1,809 SQ. FT.

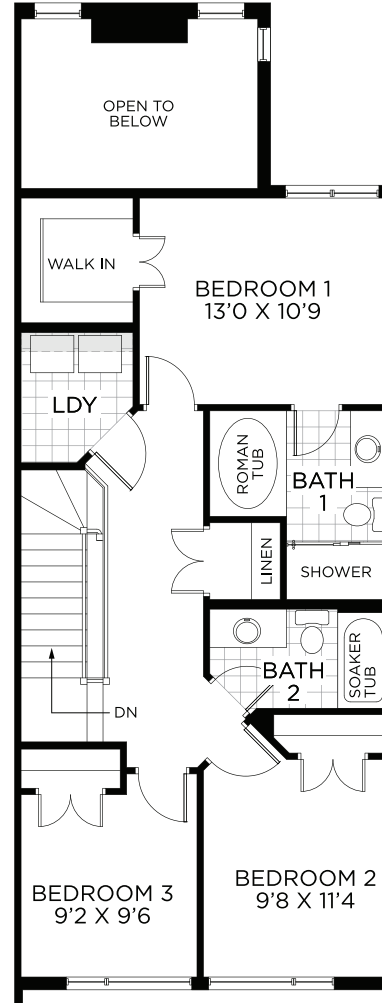
547 COBRA CRESCENT
INTERIOR UNIT
Lot 227 | Block 24 | Phase 4



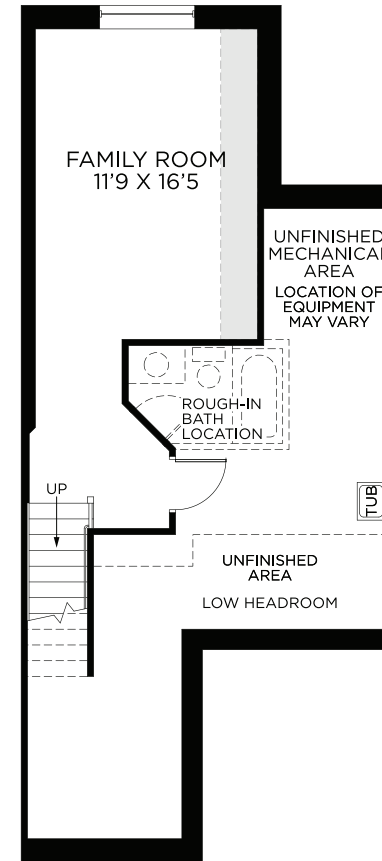
FLOORPLANS



Ground Level



Bedroom Level



Basement
Finished Area: 289 Sq. Ft.



All illustrations are artist concepts. Homes may be left of right versions. All dimensions are approximate. Actual usable space may vary from stated area. Structural/mechanical requirements may result in dimensional revisions and/or adjustments to layout. Plans and specifications are subject to change without notice. Exterior elevations are determined by Urbandale and may vary. ENERGY STAR® is an official mark of Natural Resources Canada. Used with permission. E. & O. E. 01/06/23

