



## ENDEAVOUR

2,097 SQ. FT.

543 Cobra Crescent  
END UNIT  
Lot 225 | Block 24 | Phase 4



# \$746,900

# Move In End of 2024/Start of 2025

### Select your Finishes at the Urbandale Design Centre

Optional bedroom floor layout with 3 beds, loft and 2.5 baths  
including a 4 piece luxury bath 1

\$20K in structural and electrical upgrades

#### UPGRADES

Oak hardwood staircase from main to bedroom floor  
46" Linear fireplace  
Railing in lieu of half wall in loft  
3x5 shower in Bath 1

#### CONTACT INFORMATION

Leigh Ann Shearer | Sales Consultant  
E: [bradleycommons@urbandale.com](mailto:bradleycommons@urbandale.com)



All illustrations are artist concepts and should be used as reference only. Plans and specifications are subject to change without notice. All dimensions are approximate. Actual usable floor space may vary from stated area. Structural/mechanical requirements may result in bulkheads, dimensional revisions and/or minor adjustments that follow Taron regulations. Exterior steps and landings, including garage, may vary with site grading. Brick sides and rears are subject to site specifications. R-2000 is an official mark of Natural Resources Canada. Used with permission. E. & O. E. 02/08/23



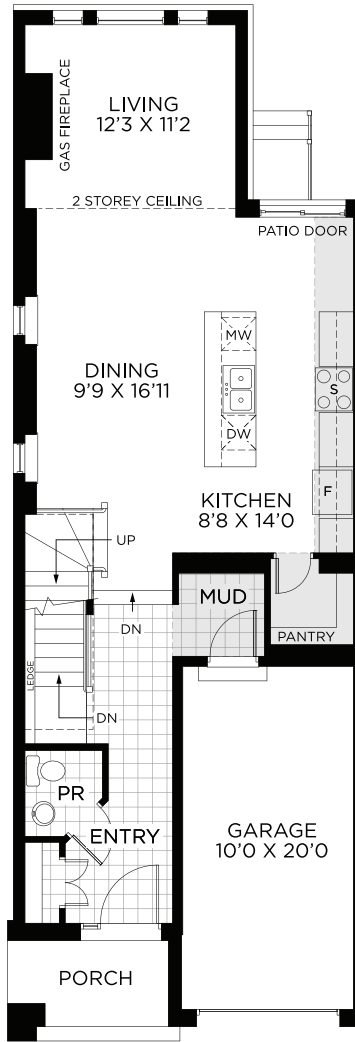
# ENDEAVOUR

2,097 SQ. FT.

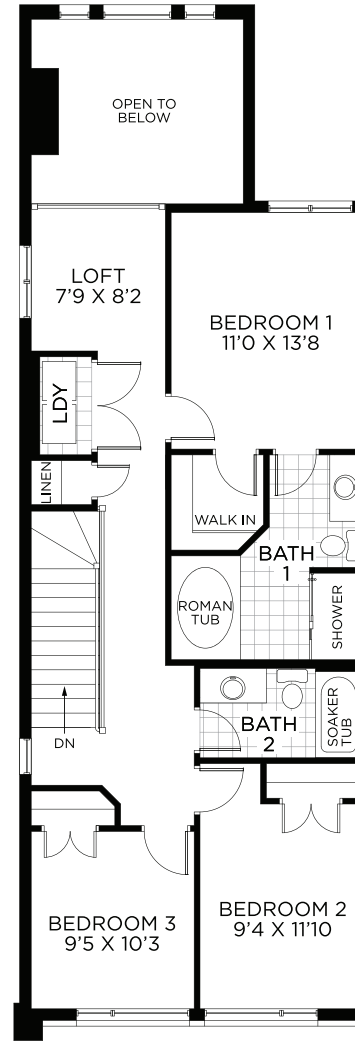
543 Cobra Crescent  
END UNIT  
Lot 225 | Block 24 | Phase 4



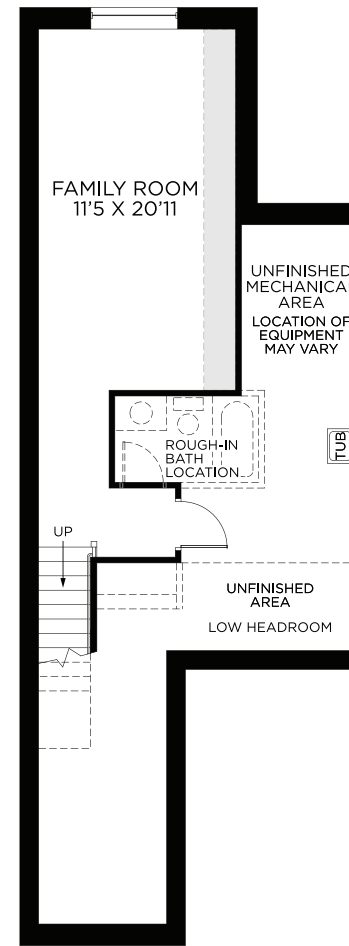
## FLOORPLANS



GROUND FLOOR



BEDROOM FLOOR



BASEMENT  
FINISHED AREA: 361 SQ. FT.



All illustrations are artist concepts and should be used as reference only. Plans and specifications are subject to change without notice. All dimensions are approximate. Actual usable floor space may vary from stated area. Structural/mechanical requirements may result in bulkheads, dimensional revisions and/or minor adjustments that follow Tarion regulations. Exterior steps and landings, including garage, may vary with site grading. Brick sides and rears are subject to site specifications. R-2000 is an official mark of Natural Resources Canada. Used with permission. E. & O. E. 02/08/23

