

ABERDEEN

2,158 SQ.FT.

35' DESIGN

HORIZON SERIES

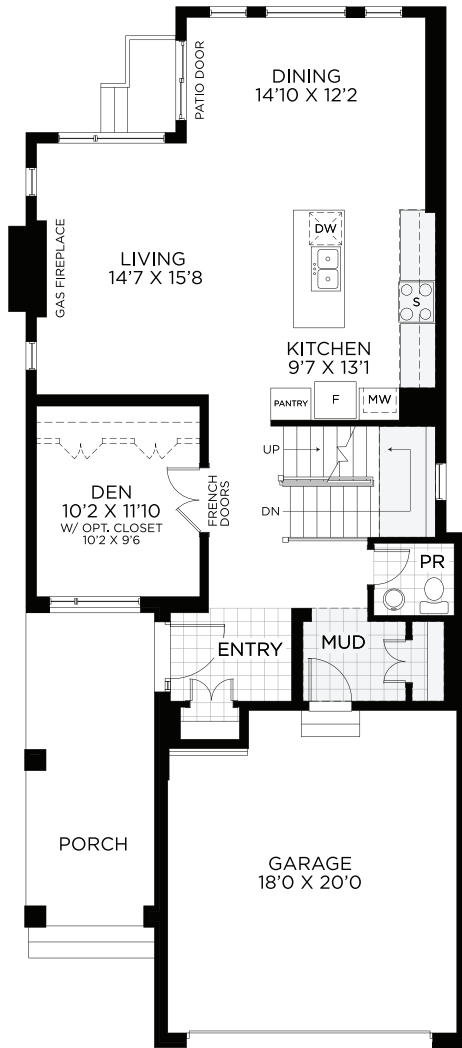


ABERDEEN

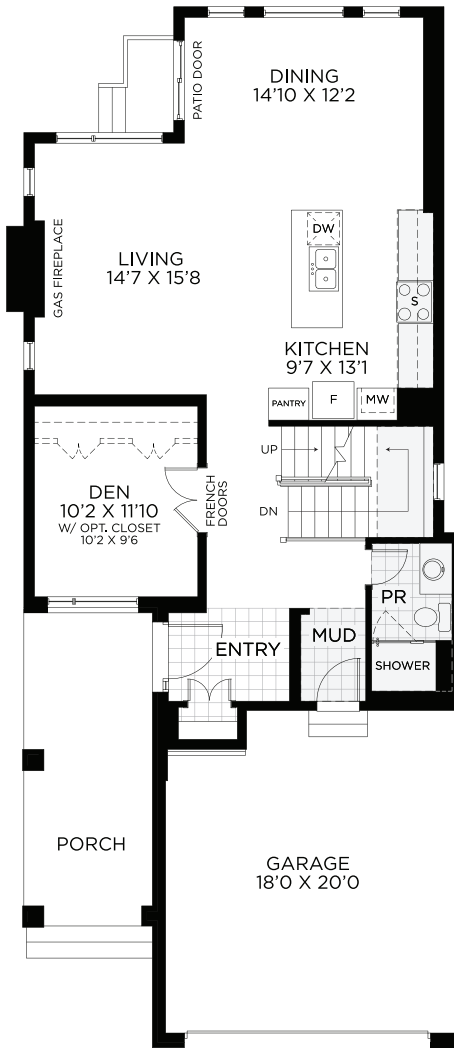
2,158 SQ.FT.

35' DESIGN

HORIZON SERIES



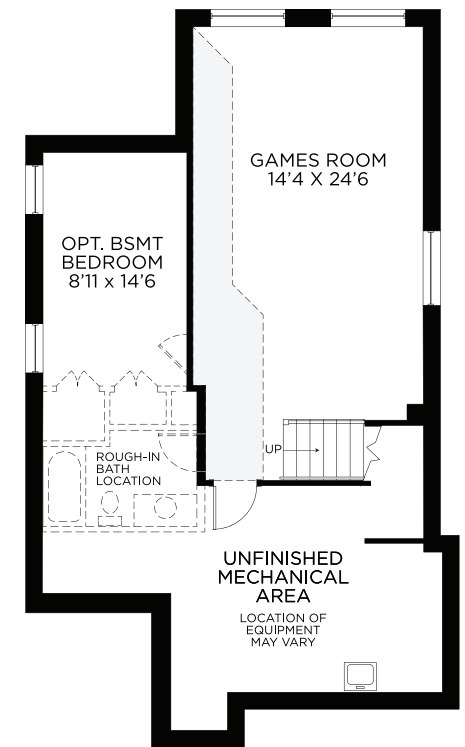
GROUND FLOOR



OPT. GROUND FLOOR
with 3PC Powder Room



BEDROOM FLOOR



BASEMENT
Finished Area 429 sq.ft.

All illustrations are artist concepts and should be used as references only. Plans and specifications are subject to change without notice. All dimensions are approximate. Actual usable floor space may vary from the stated area. Structural/mechanical requirements may result in bulkheads, dimensional revisions, and/or minor adjustments that follow Taron regulations. Exterior steps and landings, including the garage, may vary with site grading. Brick sides and rears are subject to site specifications. Our homes are qualified under the CHBA's Net Zero Ready Home Labelling Program. Logo used with permission. E. & O. E. 18/03/2024