



SANTA MARIA

2,534 SQ. FT.

RIVERSIDE SOUTH

101 Rockmellon Street
Block 6 | Phase 117-1
Lot 19 | End Unit

\$859,900

MOVE IN SUMMER 2024

Standard 4 Bedroom layout with 2.5 Bath

Over \$12K in Structural/Framing upgrades
Over \$15K in Upgraded Finishes

UPGRADES

Oak hardwood staircase from Ground to Bedroom Floor & Basement
Glass wall return Bath 1
Swing door added in Bath 1

CONTACT INFORMATION

Cheryl Barr & Kathleen Michael | Sales Consultants
E: riversouth@urbandale.com
P: 613-822-2190

All illustrations are artist concepts. Homes may be left of right versions. All dimensions are approximate. Actual usable space may vary from stated area. Structural/mechanical requirements may result in dimensional revisions and/or adjustments to layout. Plans and specifications are subject to change without notice. Exterior elevations are determined by Urbandale and may vary. ENERGY STAR® is an official mark of Natural Resources Canada. Used with permission. E. & O. E. 01/06/23



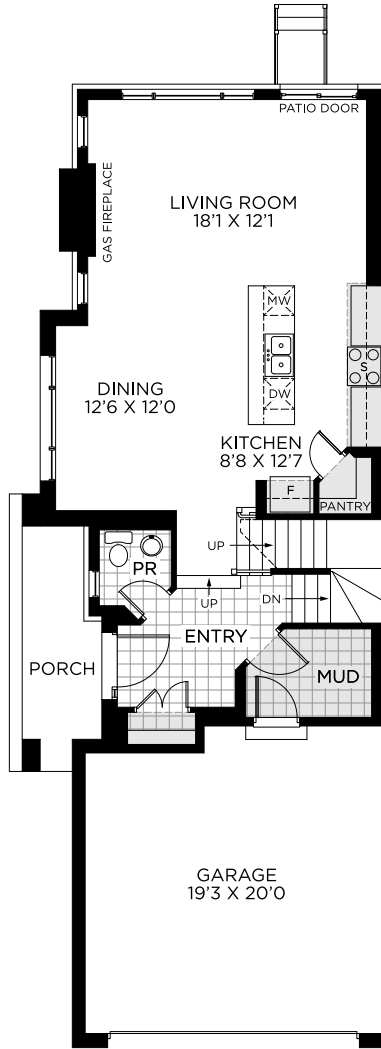
SANTA MARIA

2,534 SQ. FT.

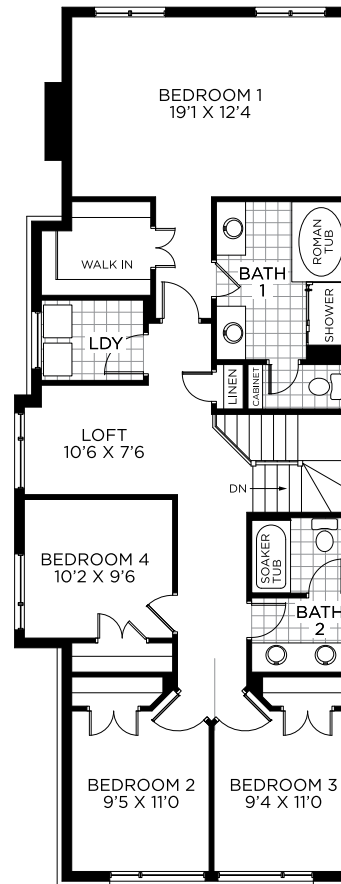
RIVERSIDE SOUTH

101 Rockmellon Street
Block 6 | Phase 117-1
Lot 19 | End Unit

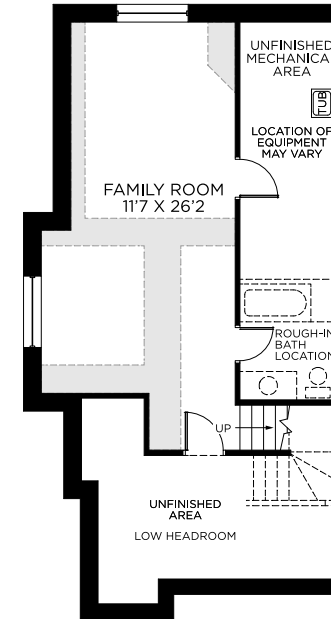
FLOORPLANS



GROUND FLOOR



BEDROOM FLOOR



BASEMENT
Basement Finished Area: 413 sq.ft.



All illustrations are artist concepts. Homes may be left of right versions. All dimensions are approximate. Actual usable space may vary from stated area. Structural/mechanical requirements may result in dimensional revisions and/or adjustments to layout. Plans and specifications are subject to change without notice. Exterior elevations are determined by Urbandale and may vary. ENERGY STAR® is an official mark of Natural Resources Canada. Used with permission. E. & O. E. 01/06/23



SANTA MARIA

2,534 SQ. FT.

RIVERSIDE SOUTH

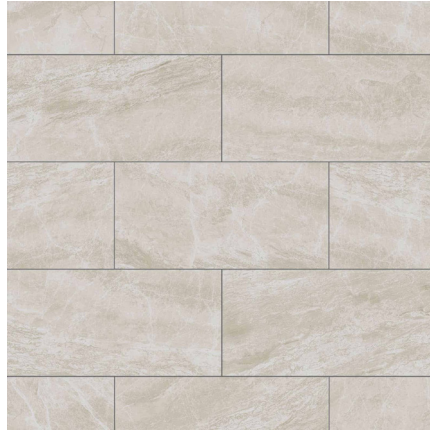
101 Rockmellon Street
Block 6 | Phase 117-1
Lot 19 | End Unit

FLOORING & PAINT THROUGHOUT

1



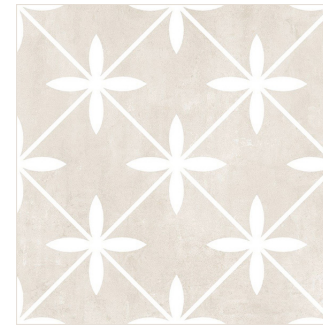
2



3



3



5



1
HARDWOOD
Biyork Nouveau 6
European Oak Valencia

2
**ENTRY, POWDER, LAUNDRY &
MUDROOM FLOOR TILE**
Ceratec Hiera - Avorio (*Matte*)
(does not include install pattern)
12x24

3
CARPET
Knob Creek - Dove

4
LAUNDRY ROOM TILE
Centura Oxford -
Beige (*Matte*)
13 x 13

5
PAINT
Benjamin Moore
Decorator's White

SANTA MARIA

2,534 SQ. FT.

RIVERSIDE SOUTH

101 Rockmellon Street
Block 6 | Phase 117-1
Lot 19 | End Unit

KITCHEN

1



2



3



4



5



6



1

CABINETRY

Amsterdam - Willow
Grey & Chiffon

2

COUNTERTOP

Galant Gray

3

BACKSPLASH

Olympia - Arctic White
(Matte)
2 x 16

4

FAUCET

Delta Osler Stainless

5

RANGE HOOD

BX21528 28\"/>

6

SINK

Blanco Quatrus R15 U modern
super single bowl

SANTA MARIA

2,534 SQ. FT.

RIVERSIDE SOUTH

101 Rockmellon Street
Block 6 | Phase 117-1
Lot 19 | End Unit

BATH 1

1



2



3



4



5



6



7



8



9



1
FLOOR TILE
Ceratec District -
Crema (Matte)
12x24

2
WALL TILE
Ceratec Vela Subway
Wave - Bianco (Glossy)
8 x 24

3
COUNTERTOP
Snow White

4
CABINTRY
Prairie - Mistral

8
ACCESSORIES
Standard Chrome

5
SHOWER TRIM
Delta Ara Chrome

9
SINK
Contrac Colette
Regular Undermount

6
TOILET
Standard

7
FAUCET(s)
Standard Chrome

SANTA MARIA

2,534 SQ. FT.

RIVERSIDE SOUTH

101 Rockmellon Street
Block 6 | Phase 117-1
Lot 19 | End Unit

BATH 2

1



2



3



4



5



6



7



8



9



1
FLOOR TILE
Ceratec District -
Crema (Matte)
12x24

2
WALL TILE
Ceratec Vela Subway
Wave - Bianco (Glossy)
8 x 24

3
COUNTERTOP
Snow White

4
CABINETY
Prairie - Mistral

8
ACCESSORIES
Standard Chrome

5
SHOWER TRIM
Delta Ara Chrome

9
SINK
Contrac Colette
Regular Undermount

6
TOILET
Standard

7
FAUCET(s)
Standard Chrome

SANTA MARIA

2,534 SQ. FT.

RIVERSIDE SOUTH

101 Rockmellon Street
Block 6 | Phase 117-1
Lot 19 | End Unit

POWDER ROOM

1



2



3



4



1
SINK

Contrac Pineview

2

TOILET

Standard

3

FAUCET

Delta Modern Stainless

4

ACCESSORIES

Standard Chrome

SANTA MARIA

2,534 SQ. FT.

RIVERSIDE SOUTH

101 Rockmellon Street
Block 6 | Phase 117-1
Lot 19 | End Unit

FIREPLACE & DOORS

1



1
FIREPLACE
Standard
36"

2



2
INTERIOR DOORS
Standard

3



3
HARDWARE
Standard & Pace Line
Satin Nickel Interior