



ATLANTIS II

2,443 SQ FT.

RIVERSIDE SOUTH

359 Mango Street
Block 23 | Phase 117-1
Lot 80 | End Unit

\$814,900

Move In End of 2024/Start of 2025

OPTIONAL 4 BEDROOM WITH LOFT LAYOUT & 2.5 BATH

\$15K in structural and electrical upgrades

UPGRADES

36" Linear fireplace

Oak hardwood staircase from main to bedroom floor with white risers

3x5 shower with glass wall return in Bath 1

Select Your Finishes at the Urbandale Design Centre

Design Centre Consultants will guide you through Urbandale's extensive range of finishes, and customize your home's interior to suit your style

10K DESIGN CENTRE BONUS!

CONTACT INFORMATION

Cheryl Barr & Kathleen Michael | Sales Consultants

E: riversouth@urbandale.com

P: 613-822-2190



All illustrations are artist concepts. Homes may be left of right versions. All dimensions are approximate. Actual usable space may vary from stated area. Structural/mechanical requirements may result in dimensional revisions and/or adjustments to layout. Plans and specifications are subject to change without notice. Exterior elevations are determined by Urbandale and may vary. ENERGY STAR® is an official mark of Natural Resources Canada. Used with permission. E. & O. E. 01/06/23



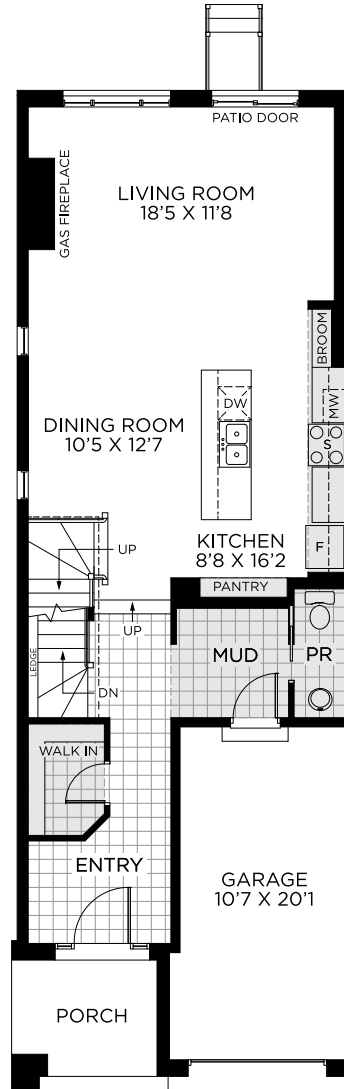
ATLANTIS II

2,443 SQ. FT.

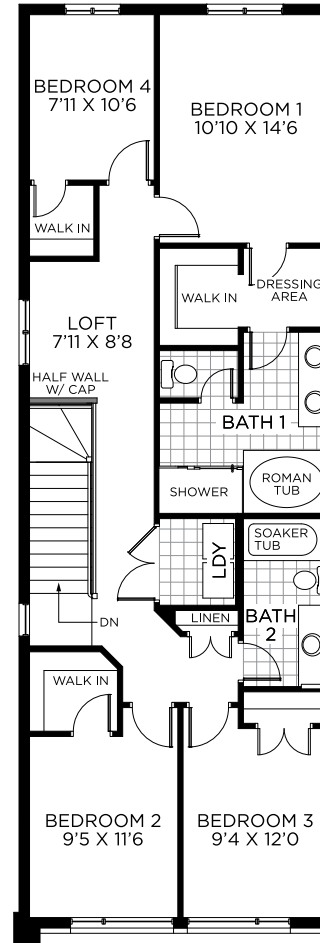
RIVERSIDE SOUTH

359 Mango Street
Block 23 | Phase 117-1
Lot 80 | End Unit

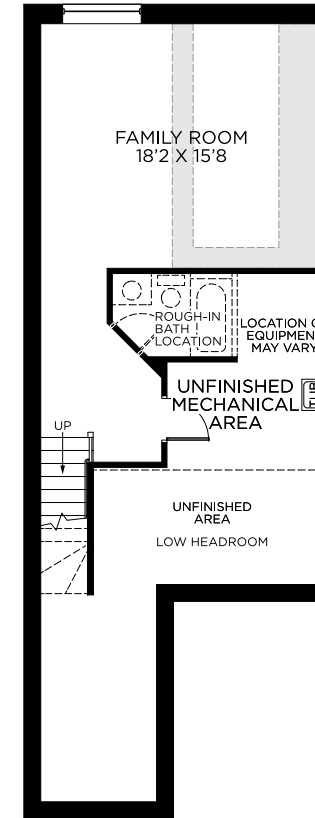
FLOORPLANS



GROUND FLOOR



BEDROOM FLOOR



BASEMENT
FINISHED BASEMENT AREA: 425 SQ. FT.



All illustrations are artist concepts. Homes may be left of right versions. All dimensions are approximate. Actual usable space may vary from stated area. Structural/mechanical requirements may result in dimensional revisions and/or adjustments to layout. Plans and specifications are subject to change without notice. Exterior elevations are determined by Urbandale and may vary. ENERGY STAR® is an official mark of Natural Resources Canada. Used with permission. E. & O. E. 01/06/23

