



## ENDEAVOUR

2,097 SQ. FT.

## RIVERSIDE SOUTH

357 Mango Street  
Block 23 | Phase 117-1  
Lot 79 | Interior Unit

# \$759,900

# Move In End of 2024/Start of 2025

STANDARD 3 BEDROOM WITH LOFT LAYOUT & 2.5 BATH

\$5K in structural and electrical upgrades

### UPGRADES

Railing in lieu of half wall  
36" Linear fireplace  
3x5 Shower in Bath 1

### Select Your Finishes at the Urbandale Design Centre

Design Centre Consultants will guide you through Urbandale's extensive range of finishes, and customize your home's interior to suit your style

**10K DESIGN CENTRE BONUS!**

### CONTACT INFORMATION

Cheryl Barr & Kathleen Michael | Sales Consultants  
E: [riversouth@urbandale.com](mailto:riversouth@urbandale.com)  
P: 613-822-2190



All illustrations are artist concepts. Homes may be left of right versions. All dimensions are approximate. Actual usable space may vary from stated area. Structural/mechanical requirements may result in dimensional revisions and/or adjustments to layout. Plans and specifications are subject to change without notice. Exterior elevations are determined by Urbandale and may vary. ENERGY STAR® is an official mark of Natural Resources Canada. Used with permission. E. & O. E. 01/06/23



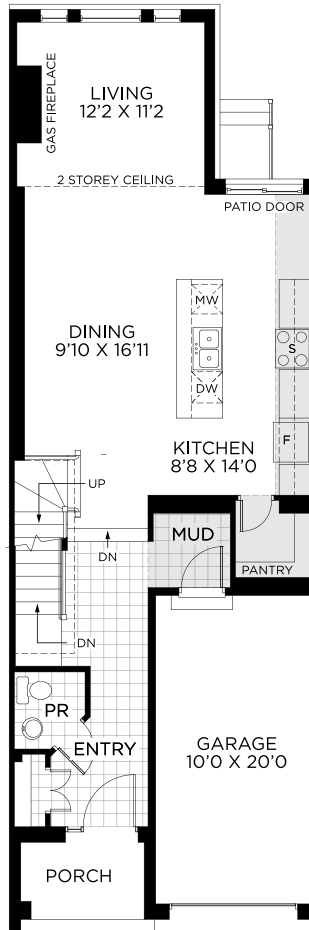
# ENDEAVOUR

2,097 SQ. FT.

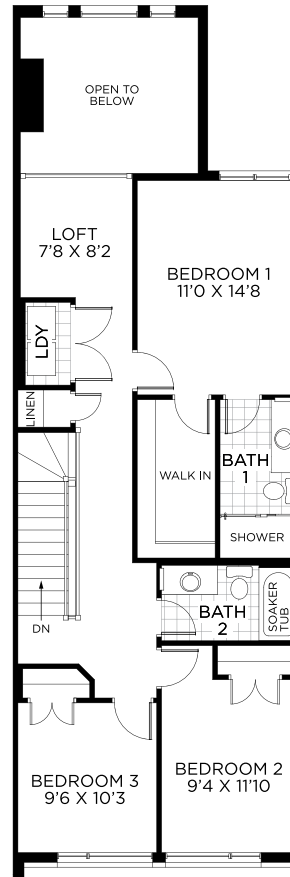
## RIVERSIDE SOUTH

357 Mango Street  
Block 23 | Phase 117-1  
Lot 79 | Interior Unit

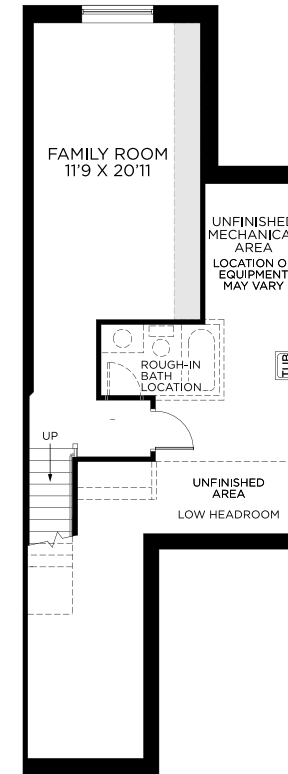
# FLOORPLANS



GROUND FLOOR



BEDROOM FLOOR



BASEMENT  
FINISHED BASEMENT AREA: 361 SQ. FT.



All illustrations are artist concepts. Homes may be left of right versions. All dimensions are approximate. Actual usable space may vary from stated area. Structural/mechanical requirements may result in dimensional revisions and/or adjustments to layout. Plans and specifications are subject to change without notice. Exterior elevations are determined by Urbandale and may vary. ENERGY STAR® is an official mark of Natural Resources Canada. Used with permission. E. & O. E. 01/06/23

