



EDISON

2,092 SQ FT.

147 Bristol Crescent
END UNIT
Lot 24 - Block 6, Phase 1

THE
creek

\$639,900

MOVE IN SPRING 2024

3 Bedroom with loft and 2.5 Bath

\$7K in Structural/Framing Upgrades
\$7K in finishes and electrical Upgrades

UPGRADES

Oak hardwood staircase from main to bedroom floor
3x5 shower in Bath 1
2nd sink in Bath 1 vanity

CONTACT INFORMATION

Alex Meahan | Sales Consultant
E: thecreek@urbandale.com

All illustrations are artist concepts and should be used as reference only. Plans and specifications are subject to change without notice. All dimensions are approximate. Actual usable floor space may vary from stated area. Structural/mechanical requirements may result in bulkheads, dimensional revisions and/or minor adjustments that follow Tarion regulations. Exterior steps and landings, including garage, may vary with site grading. Brick sides and rears are subject to site specifications. R-2000 is an official mark of Natural Resources Canada. Used with permission. E. & O. E. 11/09/23



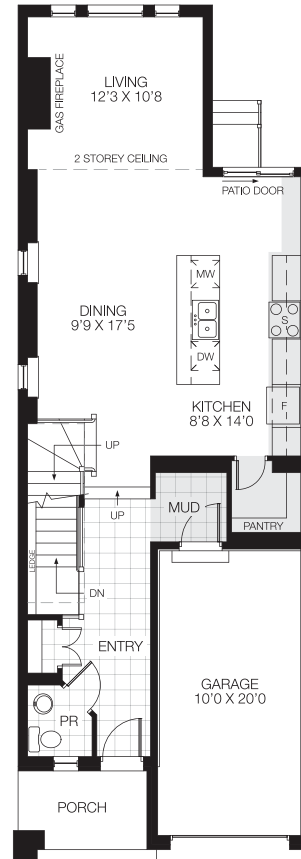
EDISON

2,092 SQ. FT.

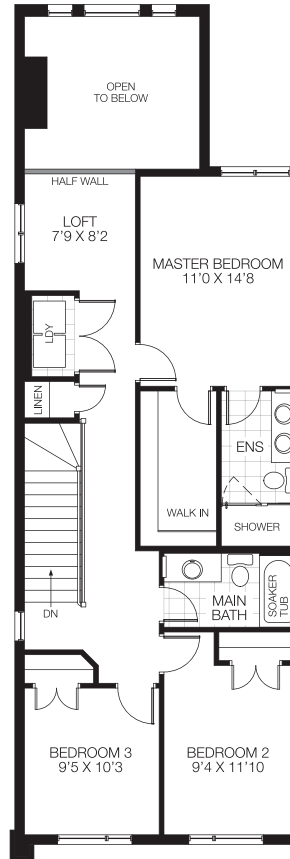
147 Bristol Crescent
END UNIT
Lot 24 - Block 6, Phase 1



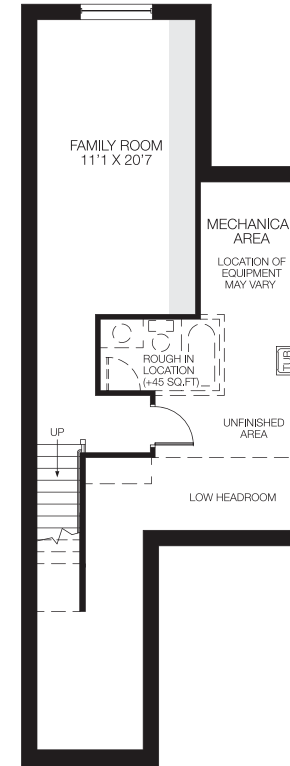
FLOORPLANS



GROUND FLOOR



BEDROOM FLOOR



BASEMENT
FINISHED AREA 361 SQ.FT.



All illustrations are artist concepts and should be used as reference only. Plans and specifications are subject to change without notice. All dimensions are approximate. Actual usable floor space may vary from stated area. Structural/mechanical requirements may result in bulkheads, dimensional revisions and/or minor adjustments that follow Tarion regulations. Exterior steps and landings, including garage, may vary with site grading. Brick sides and rears are subject to site specifications. R-2000 is an official mark of Natural Resources Canada. Used with permission. E. & O. E. 11/09/23



EDISON

2,092 SQ. FT.

147 Bristol Crescent
END UNIT
Lot 24 - Block 6, Phase 1



FLOORING & PAINT THROUGHOUT

1



2



3



4



5



1
HARDWOOD
Biyork 6 Engineered
European Oak Desert
Ark

2
CARPET
Minotaur - Morning Light

3
**ENTRY, POWDER ROOM,
MUDROOM FLOOR TILE**
Centura Pirite Dark Grey
(Matte)
12 x 24

4
LAUNDRY ROOM FLOOR TILE
Centura Legend II Series Bianco
(Matte)
12 x 24

5
PAINT
Benjamin Moore - Calm

EDISON

2,092 SQ. FT.

147 Bristol Crescent
END UNIT
Lot 24 - Block 6, Phase 1

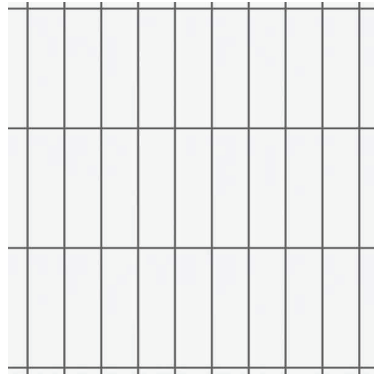


KITCHEN

1



2



3



4



5



6



1
RANGE HOOD
SCB-51930 - Stainless
Steel Cyclone Canopy
30"

2
KITCHEN BACKSPLASH
Ceratec Essential -
Bianco (Glossy)
4 x 8

3
COUNTER
Carrara Marmi

4
CABINETY
Prairie - Snowfall

5
KITCHEN FAUCET
Standard

6
SINK
Standard

EDISON

2,092 SQ. FT.

147 Bristol Crescent
END UNIT
Lot 24 - Block 6, Phase 1



BATH 1

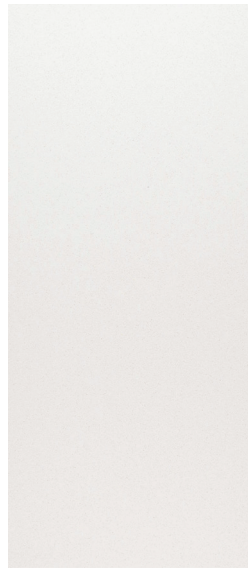
1



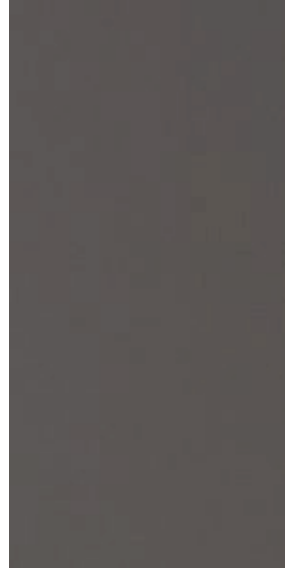
2



3



4



5



7



6



8



9



1
FLOOR TILE
Centura Pirite Dark Grey (Matte)
12 x 24

2
WALL TILE
Euro Soho - Loft Grey (Matte)
4 X 16

3
COUNTER
Frost White

4
CABINETY
Prairie - Cashmere Dusk

5
FAUCET
Standard

6
SHOWER TRIM
Standard

7
SINK
Contrac Colette

8
TOILET
Standard

9
BATH ACCESSORIES
Standard Chrome

EDISON

2,092 SQ. FT.

147 Bristol Crescent
END UNIT
Lot 24 - Block 6, Phase 1

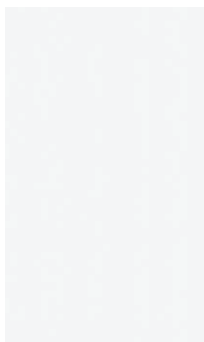


BATH 2

1



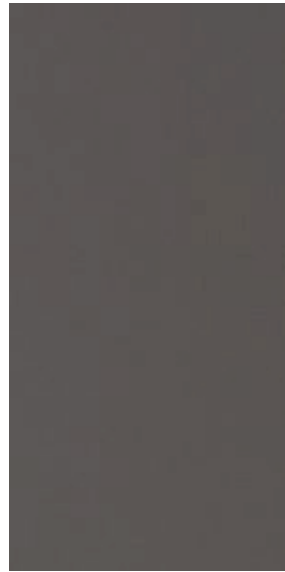
2



3



4



5



7



6



8



9



1
FLOOR TILE
Centura Legend II
Series Blanco (Matte)
12 x 24

2
WALL TILE
Euro Prissmacer Bianco
(Glossy)
8 X 12

3
COUNTER
Meridian Grey

4
CABINETY
Prairie - Cashmere Dusk

5
FAUCET
Standard

6
SHOWER TRIM
Standard

7
SINK
Contrac Colette

8
TOILET
Standard

9
BATH ACCESSORIES
Standard Chrome

EDISON

2,092 SQ. FT.

147 Bristol Crescent
END UNIT
Lot 24 - Block 6, Phase 1



POWDER ROOM

1



1
FLOOR TILE
Centura Pirite Dark
Grey (Matte)
12 x 24

2



2
FAUCET
Standard

3



3
SINK
Standard

4



4
TOILET
Standard

5



5
BATH ACCESSORIES
Standard Chrome

EDISON

2,092 SQ. FT.

147 Bristol Crescent
END UNIT
Lot 24 - Block 6, Phase 1



FIREPLACE & DOORS

1



2



3



4



1
FIREPLACE
Standard

2
INTERIOR DOORS
Standard

3
INTERIOR HARDWARE
Standard

4
EXTERIOR HARDWARE
Standard