

HILLSBORO

2,819 ,SQ FT.

298 Shuttleworth Drive
HORIZON SERIES | 44' LOT
Phase 1 | Lot 9



**SOLAR
ENERGIZED
PACKAGE**



\$1,222,900

CLOSING FALL 2024

HIGH-BACK BASEMENT WALK OUT WITH OPTIONAL 4TH BEDROOM
IN LIEU OF LOFT AND FINISHED BASEMENT BATHROOM

Net Zero Ready Home

Your new home features **Urbandale's Solar Energized Package: A 5 Kilowatt Rooftop Solar Panel System.**
In addition to solar panels and a 200 amp service, your Urbandale home will feature a system of standard features & third party certification designed to enhance comfort & efficiency.

Over \$20K in Structural/Framing upgrades

Over \$1400 in electrical upgrades

Upgrades:

Finished Basement Bath

Oak hardwood staircase from main to bedroom floor

Dual threshold shower in Bath 1

46" Linear fireplace

Select Your Finishes at the Urbandale Design Centre

Design Centre Consultants will guide you through Urbandale's extensive range of finishes, and customize your home's interior to suit your style

30K DESIGN CENTRE BONUS!

CONTACT INFORMATION

Alex Meahan | Sales Consultants

E: cowansgrove@urbandale.com

P: 613-425-1083

All illustrations and images are artist concepts and should be used as reference only. Solar panel arrangement and roof layout may vary on home footing and best sunlight capture. Plans and specifications are subject to change without notice. All dimensions are approximate. Actual usable floor space may vary from stated area. Structural/mechanical requirements may result in bulkheads, dimensional revisions and/or minor adjustments that follow Tarion regulations. Exterior steps and landings, including garage, may vary with site grading. Brick sides and rears are subject to site specifications. Our homes are qualified under the CHBA's Net Zero Ready Home Labelling Program. Logo used with permission. E. & O. E. 18/01/24



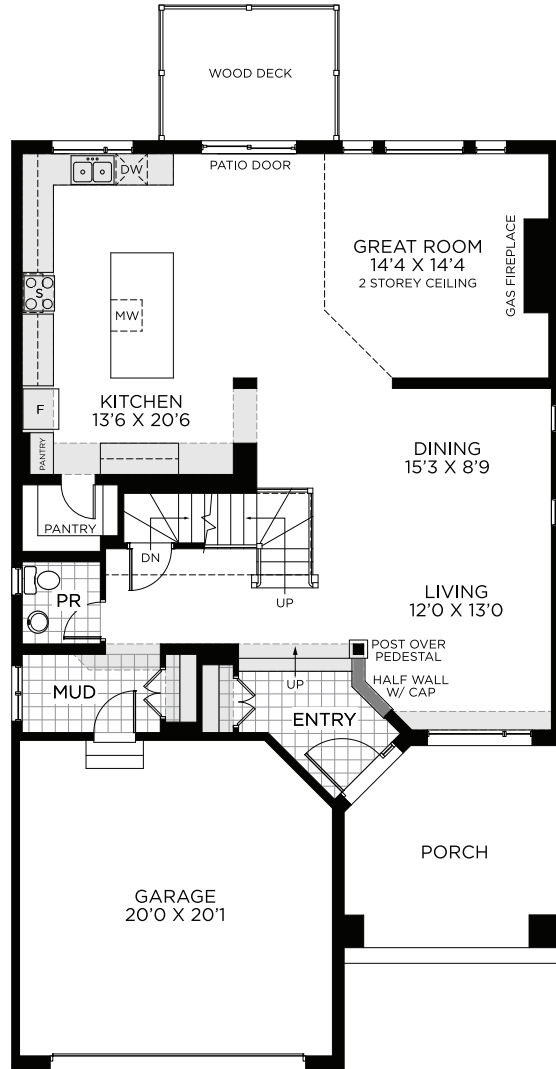
HILLSBORO

2,819 ,SQ FT.

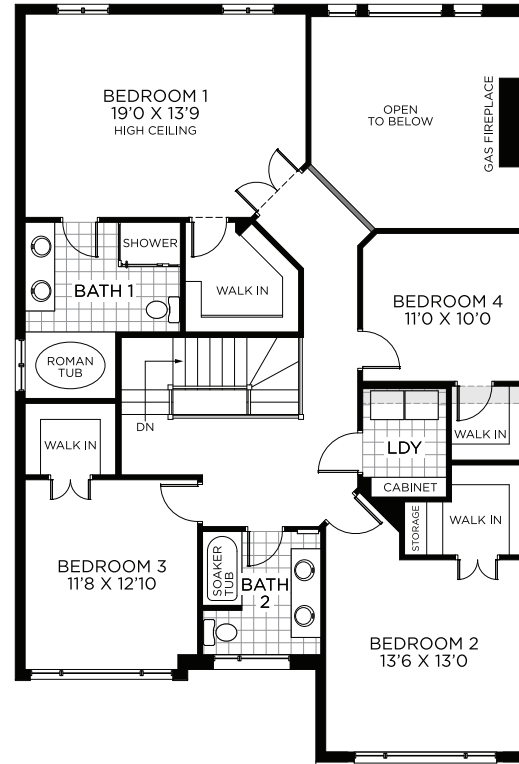
298 Shuttleworth Drive
HORIZON SERIES | 44' LOT
Phase 1 | Lot 9



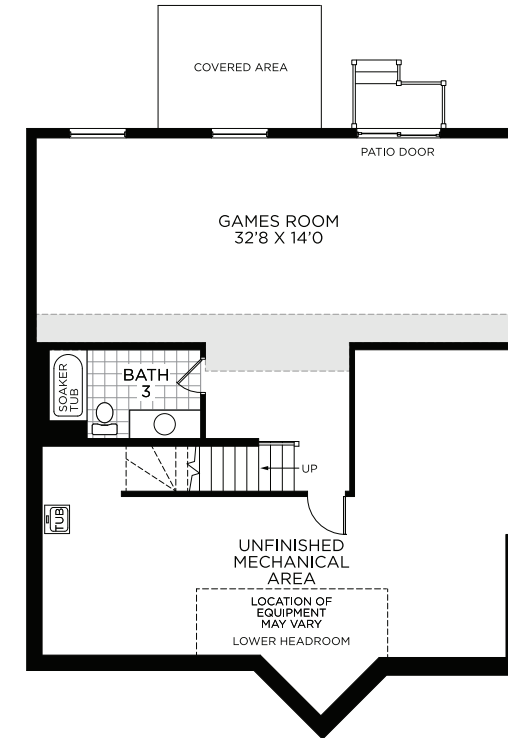
FLOORPLAN



GROUND FLOOR



BEDROOM FLOOR



BASEMENT - FINISHED AREA 602 SQ.FT.



All illustrations are artist concepts and should be used as reference only. Plans and specifications are subject to change without notice. All dimensions are approximate. Actual usable floor space may vary from stated area. Structural/mechanical requirements may result in bulkheads, dimensional revisions and/or minor adjustments that follow Tarion regulations. Exterior steps and landings, including garage, may vary with site grading. Brick sides and rears are subject to site specifications. Our homes are qualified under the CHBA's Net Zero Ready Home Labelling Program. Logo used with permission. E. & O. E. 08/24/23

