

PORTLAND

2,914 SQ. FT.

146 Shuttleworth Drive
PACIFIC SERIES | 44' LOT
Phase 1 | Lot 218



SOLAR
ENERGIZED
PACKAGE



\$1,204,900

CLOSING FALL 2024

OPTIONAL BEDROOM 4 LAYOUT W/3.5 BATHS AND 2ND FLOOR LAUNDRY

Net Zero Ready Home

Your new home features **Urbandale's Solar Energized Package: A 5 Kilowatt Rooftop Solar Panel System.** In addition to solar panels and a 200 amp service, your Urbandale home will feature a system of standard features & third party certification designed to enhance comfort & efficiency.

Upgrades include: Oak hardwood staircase to bedroom floor, Freestanding tub in ensuite, a 3x5 shower in Bath 1 and a 3x5 shower in Bath 3

Select Your Finishes at the Urbandale Design Centre

Design Centre Consultants will guide you through Urbandale's extensive range of finishes, and customize your home's interior to suit your style.

10K DESIGN CENTRE BONUS!

CONTACT INFORMATION

Alex Meahan | Sales Consultant

E: cowansgrove@urbandale.com

P: 613-425-1083

All illustrations and images are artist concepts and should be used as reference only. Solar panel arrangement and roof layout may vary on home footing and best sunlight capture. Plans and specifications are subject to change without notice. All dimensions are approximate. Actual usable floor space may vary from stated area. Structural/mechanical requirements may result in bulkheads, dimensional revisions and/or minor adjustments that follow Tarion regulations. Exterior steps and landings, including garage, may vary with site grading. Brick sides and rears are subject to site specifications. Our homes are qualified under the CHBA's Net Zero Ready Home Labelling Program. Logo used with permission. E. & O. E. 18/01/24



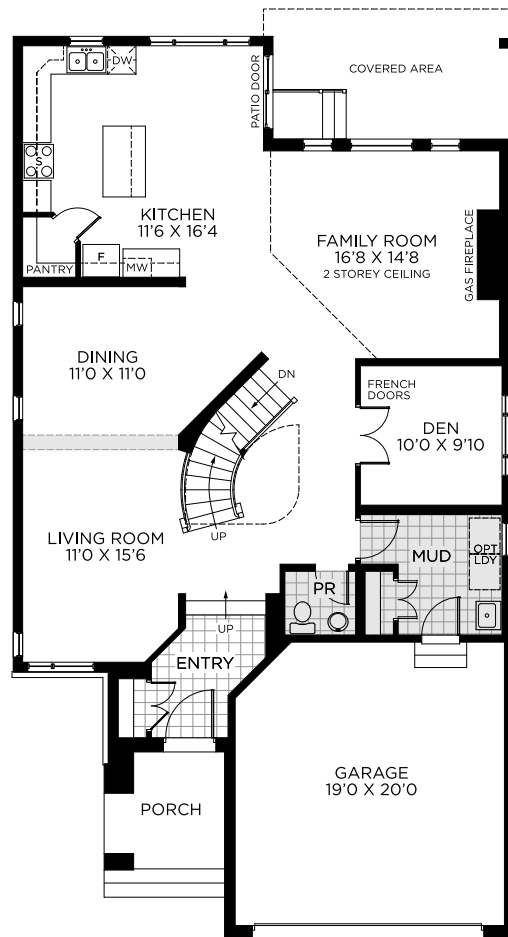
PORTLAND

2,914 SQ. FT.

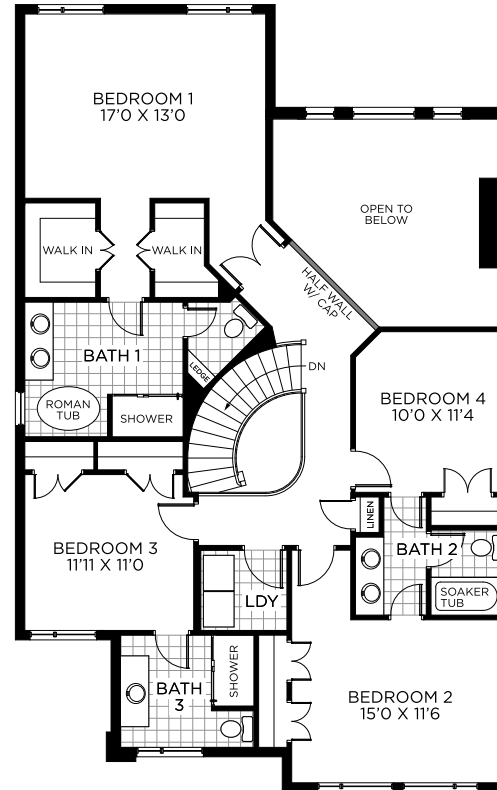
146 Shuttleworth Drive
PACIFIC SERIES | 44' LOT
Phase 1 | Lot 218



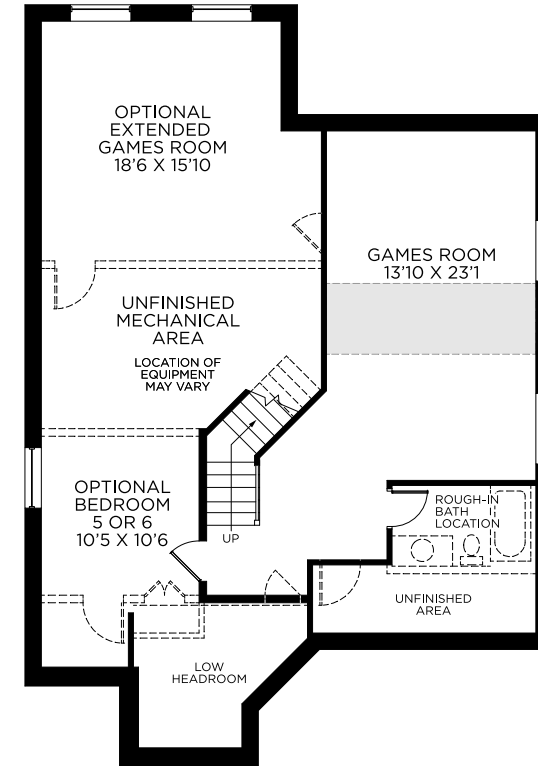
FLOORPLAN



GROUND FLOOR



OPT. BEDROOM FLOOR
OR 4 BEDROOMS & 3.5 BATHS



BASEMENT - FINISHED AREA 468 SQ.FT.



All illustrations are artist concepts and should be used as reference only. Plans and specifications are subject to change without notice. All dimensions are approximate. Actual usable floor space may vary from stated area. Structural/mechanical requirements may result in bulkheads, dimensional revisions and/or minor adjustments that follow Tarion regulations. Exterior steps and landings, including garage, may vary with site grading. Brick sides and rears are subject to site specifications. Our homes are qualified under the CHBA's Net Zero Ready Home Labelling Program. Logo used with permission. E. & O. E. 08/24/23

