

ASTORIA

2,355 SQ. FT.

142 Shuttleworth Drive  
PACIFIC SERIES | 35' LOT  
Phase 1 | Lot 219



SOLAR  
ENERGIZED  
PACKAGE



**\$1,048,900**

**CLOSING FALL 2024**

STANDARD 3 BEDROOM LAYOUT W/LOFT & 2.5 BATH

**Net Zero Ready Home**

Your new home features **Urbandale's Solar Energized Package: A 5 Kilowatt Rooftop Solar Panel System.** In addition to solar panels and a 200 amp service, your Urbandale home will feature a system of standard features & third party certification designed to enhance comfort & efficiency.

**Upgrades include:** Freestanding tub in Bath 1 and 3x5 shower in Bath 1

**Select Your Finishes at the Urbandale Design Centre**

Design Centre Consultants will guide you through Urbandale's extensive range of finishes, and customize your home's interior to suit your style.

**10K DESIGN CENTRE BONUS!**

**CONTACT INFORMATION**

Alex Meahan | Sales Consultant

E: [cowansgrove@urbandale.com](mailto:cowansgrove@urbandale.com)

P: 613-425-1083

All illustrations are artist concepts and should be used as reference only. Plans and specifications are subject to change without notice. All dimensions are approximate. Actual usable floor space may vary from stated area. Structural/mechanical requirements may result in bulkheads, dimensional revisions and/or minor adjustments that follow Tarion regulations. Exterior steps and landings, including garage, may vary with site grading. Brick sides and rears are subject to site specifications. Our homes are qualified under the CHBA's Net Zero Ready Home Labelling Program. Logo used with permission. E. & O. E. 08/24/23



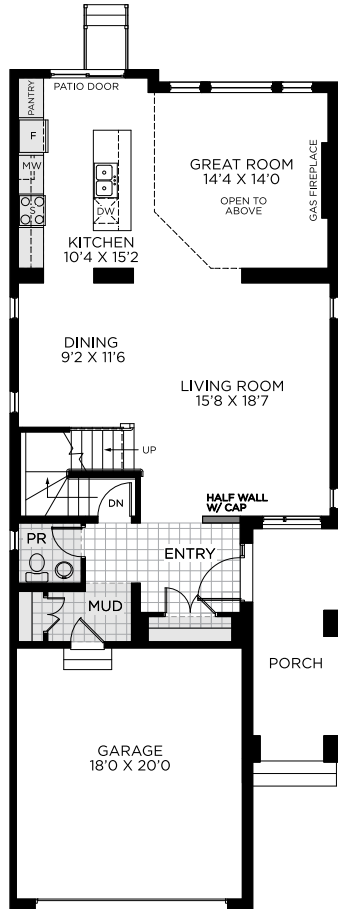
# Astoria

2,355 SQ. FT.

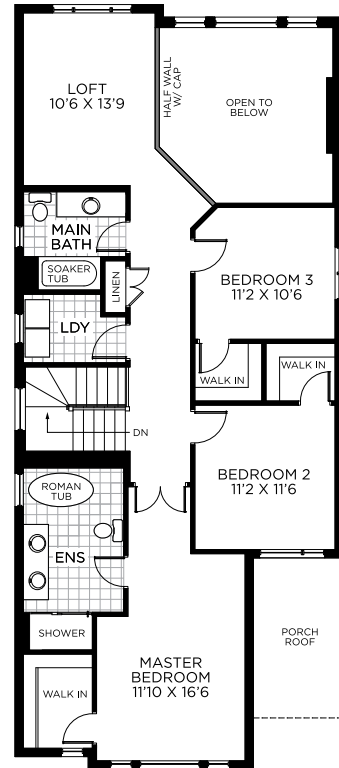
142 Shuttleworth Drive  
PACIFIC SERIES | 35' LOT  
Phase 1 | Lot 219



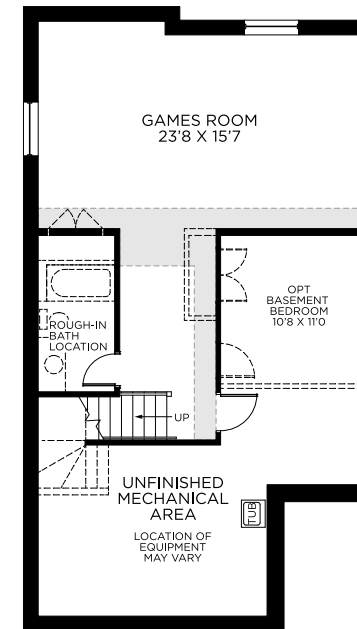
# FLOORPLAN



GROUND FLOOR



BEDROOM FLOOR



BASEMENT - FINISHED AREA 520 SQ.FT.



All illustrations are artist concepts and should be used as reference only. Plans and specifications are subject to change without notice. All dimensions are approximate. Actual usable floor space may vary from stated area. Structural/mechanical requirements may result in bulkheads, dimensional revisions and/or minor adjustments that follow Tarion regulations. Exterior steps and landings, including garage, may vary with site grading. Brick sides and rears are subject to site specifications. Our homes are qualified under the CHBA's Net Zero Ready Home Labelling Program. Logo used with permission. E. & O. E. 08/24/23

