



## ATLANTIS

2341 SQ. FT.

182 Bliss Crescent  
INTERIOR UNIT  
Lot 133 | Block 14 | Phase 004



# \$724,900 CLOSING SUMMER 2024

STANDARD 3 BEDROOM LAYOUT W/LOFT & LUXURY BATH 1

### UPGRADES

3x5 Shower With Glass Return At Bath 1  
Oak Hardwood Stairs From Main Floor To 2nd Level  
Oak Railing At Half Wall  
Linear 36 Fireplace  
Keyless Fixtures in Kitchen

### Select Your Finishes at the Urbandale Design Centre

Design Centre Consultants will guide you through Urbandale's extensive range of finishes, and customize your home's interior to suit your style.

### CONTACT INFORMATION

Leigh Ann Shearer | Sales Consultant  
E: [lshearer@urbandale.com](mailto:lshearer@urbandale.com)



All illustrations are artist concepts. Homes may be left of right versions. All dimensions are approximate. Actual usable space may vary from stated area. Structural/mechanical requirements may result in dimensional revisions and/or adjustments to layout. Plans and specifications are subject to change without notice. Exterior elevations are determined by Urbandale and may vary. ENERGY STAR® is an official mark of Natural Resources Canada. Used with permission. E. & O. E. 30/08/23



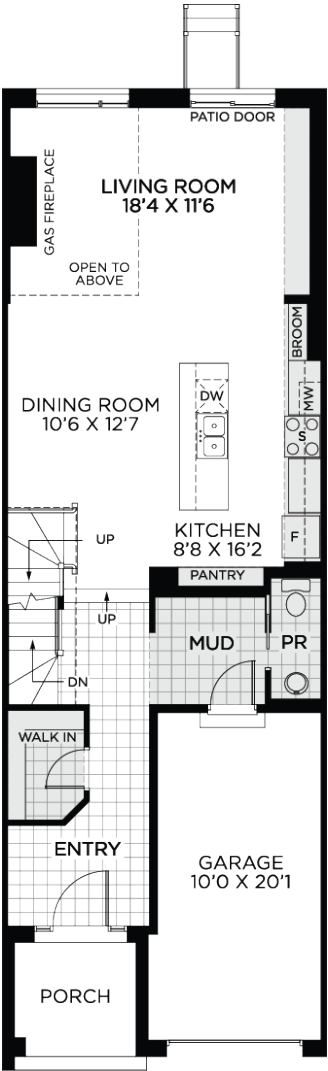
# ATLANTIS

2341 SQ. FT.

182 Bliss Crescent  
INTERIOR UNIT  
Lot 133 | Block 14 | Phase 004

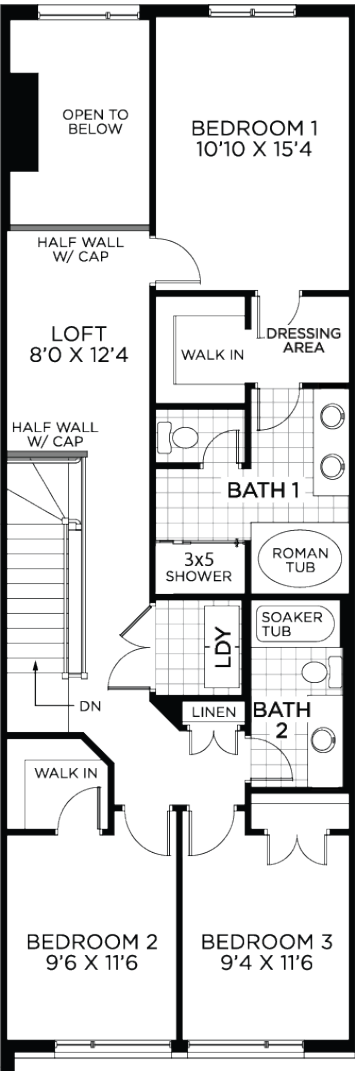


## FLOORPLAN



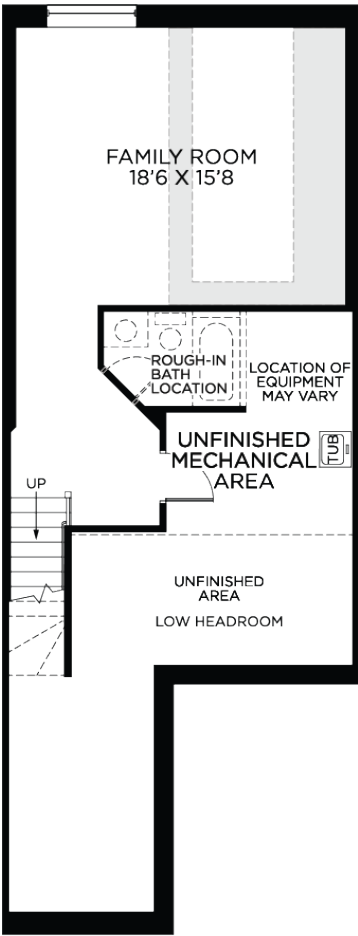
Ground floor

■ Bulkhead or Drop Ceiling



Bedroom floor

3 bedrooms w/loft & luxury bath 1



Basement

Finished area 425 sq.ft.

All illustrations are artist concepts. Homes may be left of right versions. All dimensions are approximate. Actual usable space may vary from stated area. Structural/mechanical requirements may result in dimensional revisions and/or adjustments to layout. Plans and specifications are subject to change without notice. Exterior elevations are determined by Urbandale and may vary. ENERGY STAR® is an official mark of Natural Resources Canada. Used with permission. E. & O. E. 01/06/23

