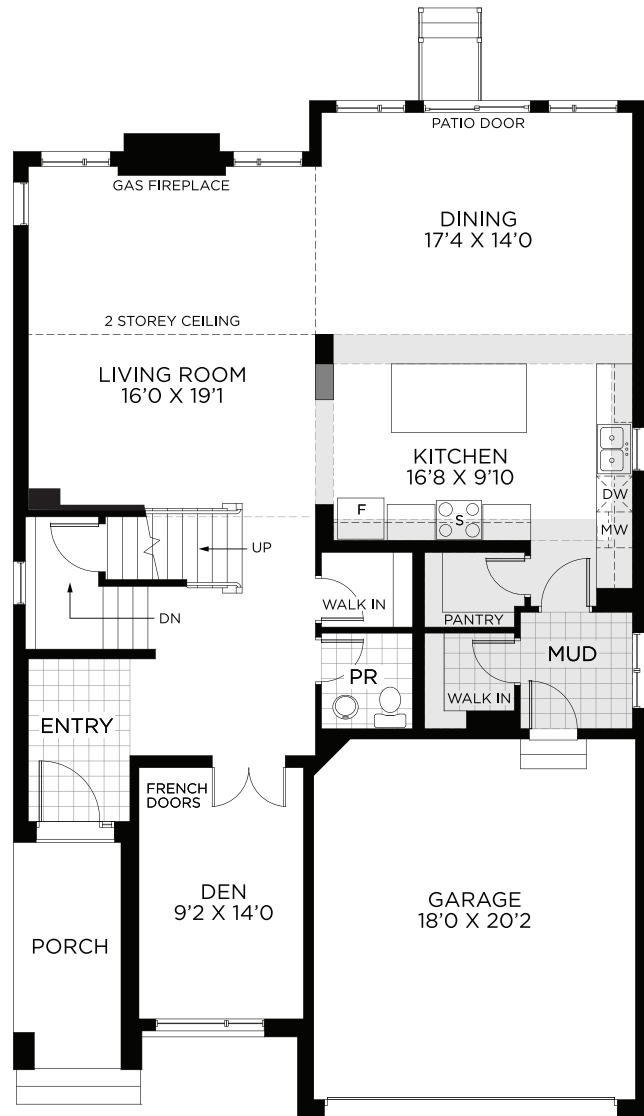




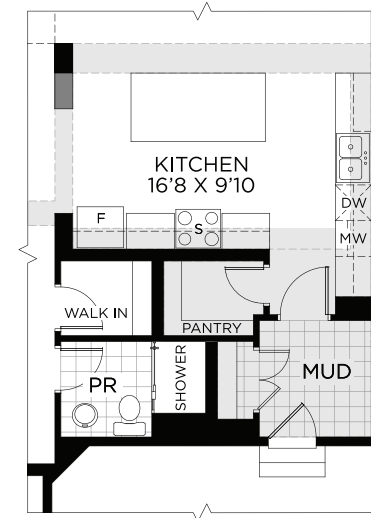
2,964 SQ.FT.

44' DESIGN

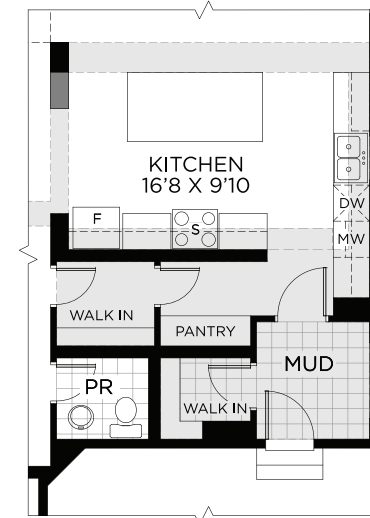
HORIZON SERIES



GROUND FLOOR



OPT. GROUND FLOOR
W/3 PC POWDER ROOM



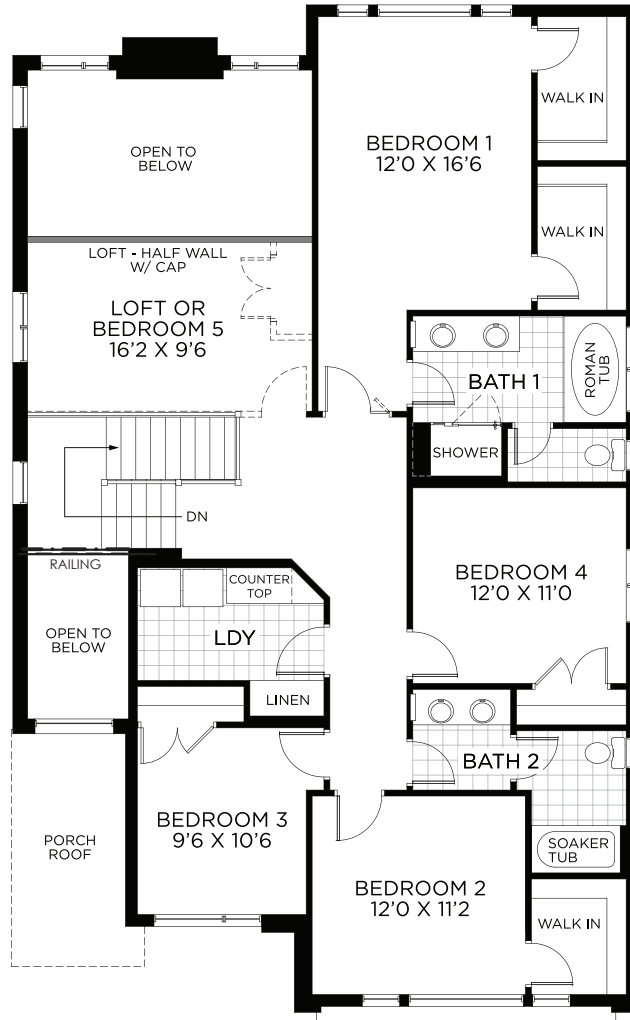
OPT. GROUND FLOOR
W/WALK-THRU ENTRY CLOSET

All illustrations are artist concepts and should be used as reference only. Plans and specifications are subject to change without notice. All dimensions are approximate. Actual usable floor space may vary from stated area. Structural/mechanical requirements may result in bulkheads, dimensional revisions and/or minor adjustments that follow Tarion regulations. Exterior steps and landings, including garage, may vary with site grading. Brick sides and rears are subject to site specifications. R-2000 is an official mark of Natural Resources Canada. Used with permission. E. & O.E. 16/11/21

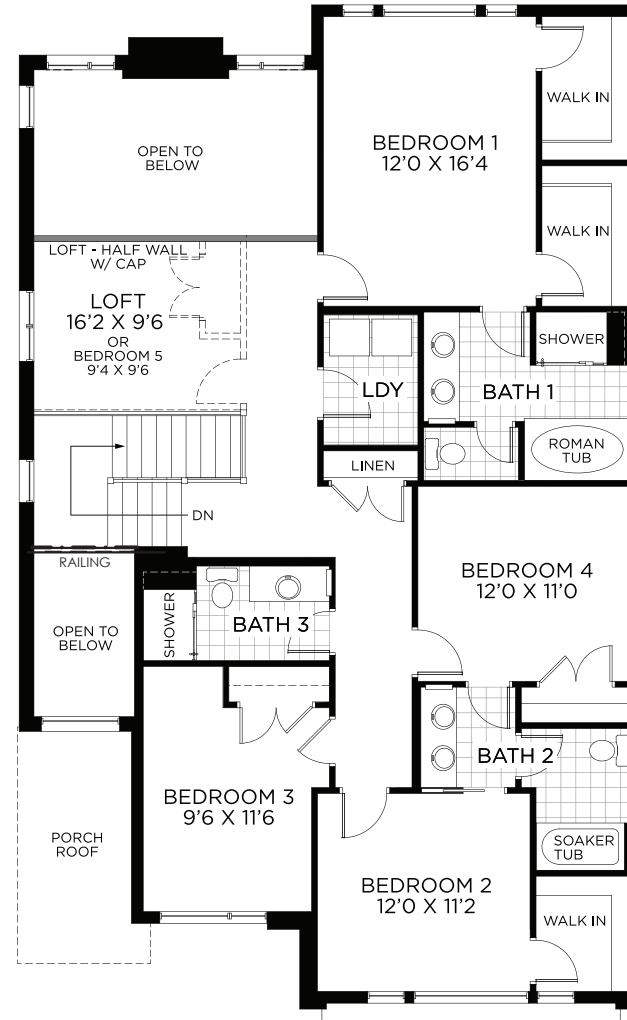
2,964 SQ.FT.

44' DESIGN

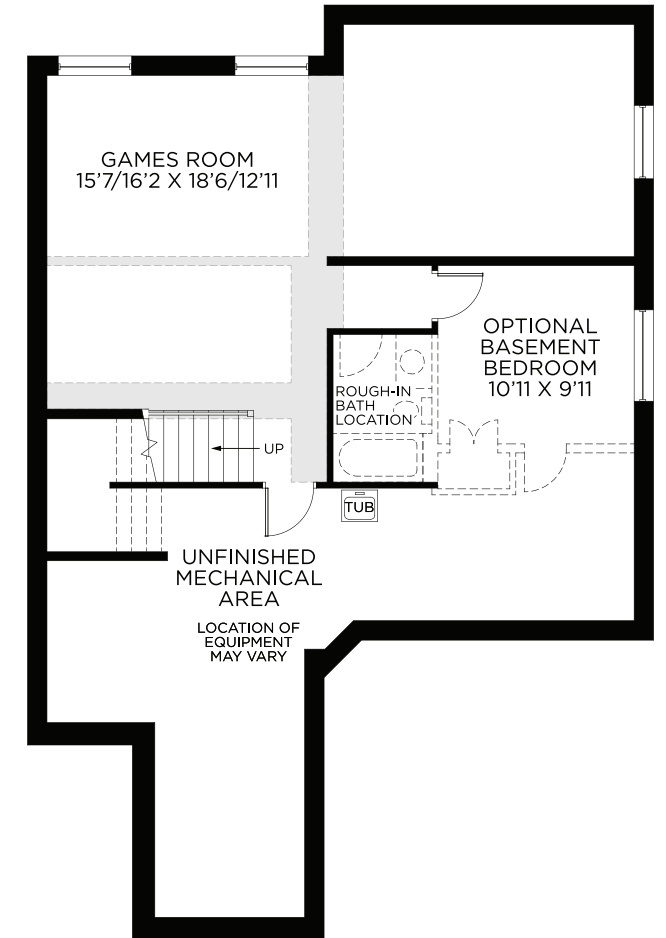
HORIZON SERIES



BEDROOM FLOOR



OPT. BEDROOM FLOOR W/3.5 BATHS



BASEMENT - FINISHED AREA 595 SQ.FT.